



NEWHAM
SAFEGUARDING CHILDREN
PARTNERSHIP

Newham Social Care Academy Training Programme September 2025 – July 2026



BUILDING A
FAIRER
NEWHAM



Contents page

| | |
|--|-------|
| Booking system/New E-Learning system..... | 3-4 |
| Training programme at a glance..... | 5-7 |
| London Safeguarding Children Partnership training..... | 8 |
| Social Welfare Alliance (Well Newham) training..... | 9 |
| Training programme (individual course list)..... | 10-20 |
| Research in Practice Workshop..... | 21 |
| Corporate Learning and Development Offer..... | 22 |
| Mandatory Training..... | 23 |
| Mentoring..... | 24 |
| Lunchtime seminars..... | 25 |
| Rights of Women training..... | 26 |
| Suicide Prevention training..... | 27-29 |
| Links and Resources..... | 30-32 |
| Information on integral themes..... | 33-38 |
| Barnardo's Training..... | 39 |



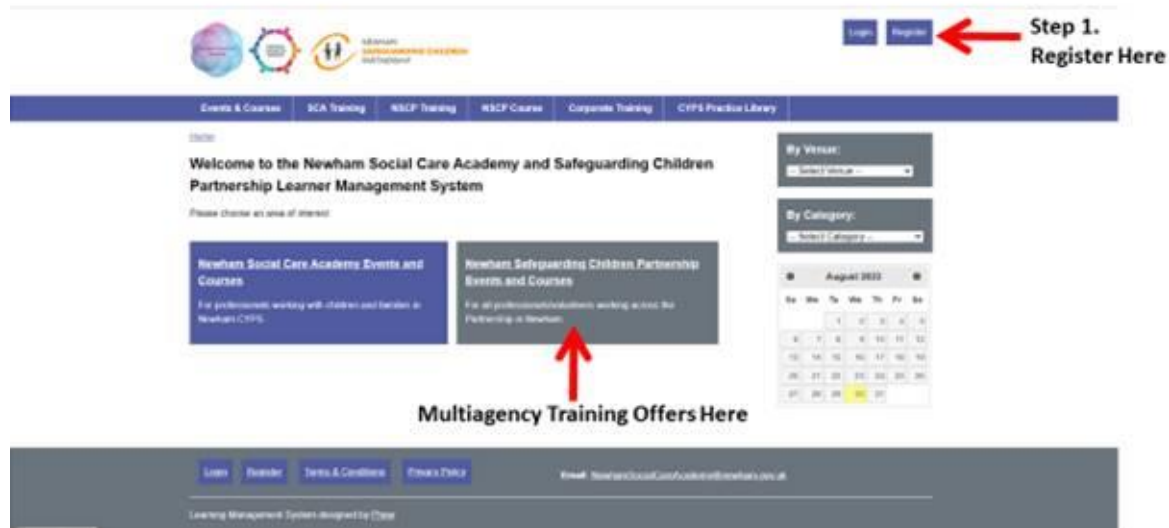
Booking system for CYPS

Training will continue to be booked via the learning management System (LMS) with the Social Care Academy (SCA) that was implemented in April 2023.

Please see the guidance below to create your account on the site, if you do not have one, and also on how to book a course.

Use the link below to access the site but it can also be accessed on the NSCP website.

<https://newhamsca.event-booking.org.uk/>



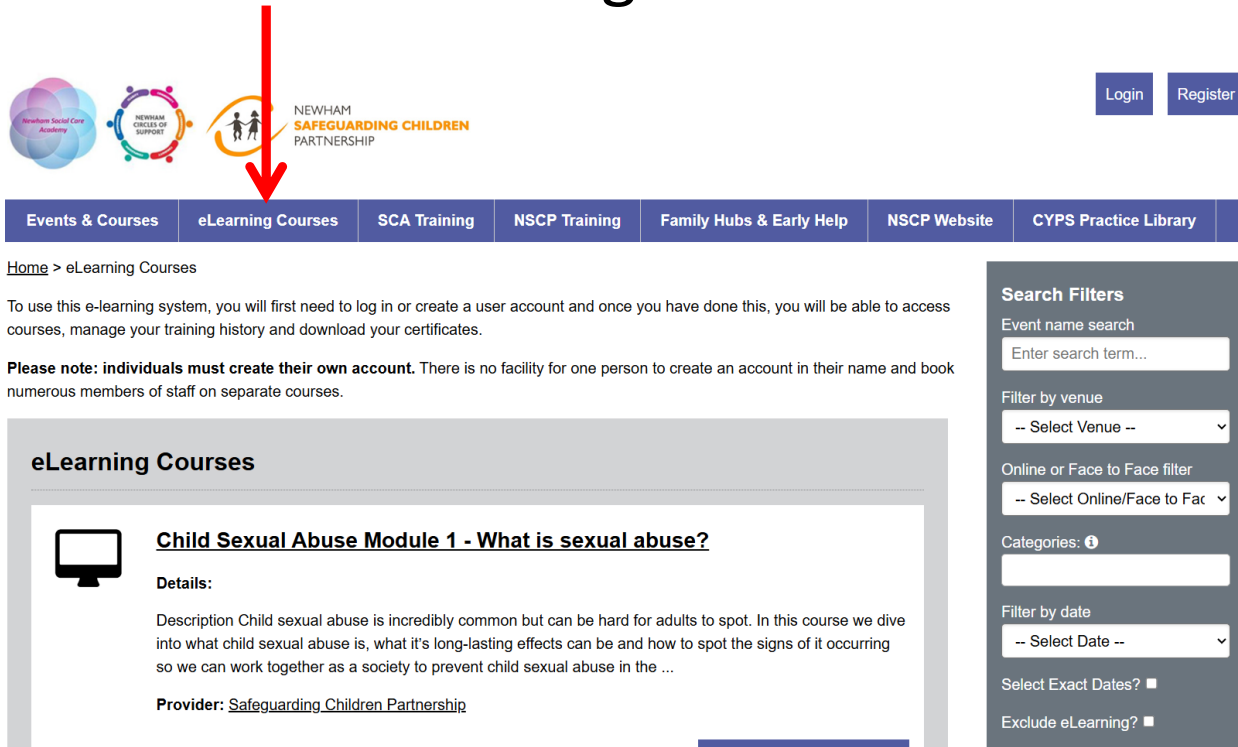
Step 1.
Register Here

Multiagency Training Offers Here

Any concerns email
newhamsocialcareacademy@newham.gov.uk

NEW E-Learning System

We have implemented a new e-learning suite onto our existing learning management system. You can use your usual LMS login to book onto e-learning courses.




Events & Courses | **eLearning Courses** | SCA Training | NSCP Training | Family Hubs & Early Help | NSCP Website | CYPS Practice Library

Home > eLearning Courses

To use this e-learning system, you will first need to log in or create a user account and once you have done this, you will be able to access courses, manage your training history and download your certificates.

Please note: individuals must create their own account. There is no facility for one person to create an account in their name and book numerous members of staff on separate courses.

eLearning Courses

 **Child Sexual Abuse Module 1 - What is sexual abuse?**

Details:

Description Child sexual abuse is incredibly common but can be hard for adults to spot. In this course we dive into what child sexual abuse is, what it's long-lasting effects can be and how to spot the signs of it occurring so we can work together as a society to prevent child sexual abuse in the ...

Provider: [Safeguarding Children Partnership](#)

Search Filters

Event name search
Enter search term...

Filter by venue
-- Select Venue --

Online or Face to Face filter
-- Select Online/Face to Fac --

Categories: ⓘ

Filter by date
-- Select Date --

Select Exact Dates? ■

Exclude eLearning? ■

E-Learning Courses currently available include:

- Conflict Management
- Framework for Assessments
- Mental Health Awareness
- Multi-Agency Working
- Online Safety Risks to Children
- Supporting Male Victims of Domestic Abuse
- + More

At a Glance Learning and Development Offer for September – December 2025

| September | October | November | December |
|---|--|--|--|
| <p>17/09/25</p> <ul style="list-style-type: none"> Practice Learning Conversation (PLC) training workshop for practitioners/social worker/PA's (online) <p>18/09/25</p> <ul style="list-style-type: none"> Practice Learning Conversation (PLC) training workshop for managers/auditors (online) <p>23/09/24 and 24/09/24</p> <ul style="list-style-type: none"> Safe and Together Overview (2 x half days online) <p>16/09/24</p> <ul style="list-style-type: none"> Hestia MARAC & Domestic Abuse Awareness training (online) | <p>13/10/25, 14/10/25, 20/10/25 and 21/10/25</p> <ul style="list-style-type: none"> Safe and Together Core Workshop (4 x full days online) <p>06/10/25 & 07/10/25</p> <ul style="list-style-type: none"> Safe and Together Overview (online) | <p>10/11/25, 11/11/25, 17/11/25 and 18/11/25</p> <ul style="list-style-type: none"> Safe and Together Core Workshop (4 x full days online) <p>TBC</p> <ul style="list-style-type: none"> Practice Learning Conversation (PLC) training workshop for practitioners/social worker/PA's (online) <p>TBC</p> <ul style="list-style-type: none"> Practice Learning Conversation (PLC) training workshop for managers/auditors (online) <p>17/11/25</p> <ul style="list-style-type: none"> Induction to Children and Young People's Service <p>21/11/25</p> <ul style="list-style-type: none"> Half day introduction to Systemic Practice (online) <p>25/11/25</p> <ul style="list-style-type: none"> Time Management (online) | <p>TBC</p> <ul style="list-style-type: none"> Direct Work Effective relational recording and minute taking (including use of language that cares) Relational working for management Assessment Skills |
| <p>https://newhamsca.event-booking.org.uk/</p> | | | <p>5</p> |

At a Glance Learning and Development Offer for January – April 2026

| January | Feb | March |
|--|--|---|
| <p>21/01/25</p> <ul style="list-style-type: none"> • Half day Introduction to Systemic Ideas (online) | <p>02/02/26</p> <ul style="list-style-type: none"> • Induction to Children and Young People’s Service (online) <p>06/02/26</p> <ul style="list-style-type: none"> • Half day introduction to Systemic Practice <p>12/02/26 - TBC</p> <ul style="list-style-type: none"> • Together and apart/sibling assessments (in-person) | <p>05/03/26</p> <ul style="list-style-type: none"> • Child and Adolescent Development and Attachment (online) <p>05/03/26</p> <ul style="list-style-type: none"> • Safeguarding Children with Disabilities (online) <p>11/03/26</p> <ul style="list-style-type: none"> • Working Effectively with Children with Additional Needs: Communication, Advocacy, and Safety (online) <p>18/03/26</p> <ul style="list-style-type: none"> • Child and Family Assessment: A Holistic Approach to Risk and Needs (online) <p>25/03/26</p> <ul style="list-style-type: none"> • Child and Adolescent Development and Attachment <p style="text-align: center;">April</p> <p>17/04/26</p> <ul style="list-style-type: none"> • Induction to Children and Young People’s Service (online) |
| <p style="text-align: center;">https://newhamsca.event-booking.org.uk/</p> | | |

At a Glance Learning and Development Offer for April – July 2026

| April | May | June |
|-------|---|------|
| TBC | <p>01/05/26</p> <ul style="list-style-type: none">• Half day introduction to Systemic Practice | TBC |

Pan-London offer from the London Safeguarding Children Partnership (LSCP)

Find a wide range of half day and bite size offers on the following on website at <https://www.londonscb.gov.uk/resources/training-and-bookings/> .

September offers:

Understanding Abuse From the Inside Out: A Real-World Guide for Safeguarding Professionals
Tuesday 9 September 2025 | 10:00-11:00

Supporting children and parents of children who have been sexually abused – in a trauma informed way
Wednesday 17 September 2025 | 14:00-15:00

Falling through the Cracks – supporting parents and carers of survivors of abuse
Tuesday 23 September 2025 | 10:00-11:30

Roma Culture Awareness – with focus on safeguarding and child protection
Tuesday 30 September 2025 | 10:00-12:00

Newham Social Welfare Alliance Training (Well Newham)



Offer a training development pathway for all frontline workers in the borough who are regularly having conversations with residents who are presenting with a range of social welfare issues. There are a number of themes with different session topics included delivered by our specialist tutors.

The purpose of this is to enhance the skills you already have! And facilitate you getting in touch with others having similar conversations across the borough. The training sessions are all delivered online and are free to attend, after attending a session we will recommend other sessions to support your learning, and provide resources and useful contact information for you to refer back to.

For more information and to check for the most up-to-date programme please visit

[Events for frontline workers | Well Newham](#)

If you need any additional support to participate in the training session please contact us: helena.taylor@newham.gov.uk
or agata.roszczynska@newham.gov.uk

Topics include:

- Reducing Parental Conflict (Healthy Relationships) Awareness Session (10.09.25 and 13.11.25)
- Entitlement to Healthcare Training (16.09.25)
- Children Safeguarding Awareness training (30.09.25)
- Introduction to Extremism and Radicalisation: The Newham Context (03.10.25)
- Substance Misuse Awareness (23.10.25)

Half day Introduction to Systemic Ideas

This is a half day introduction to systemic practice and ideas.

This is mandatory training for all staff in the Children and Young People Service.



Trainers Family Therapy team

Online

21.11.25

06.02.26

01.05.26

Please arrive 10 minutes prior to the start time.

10:00 Start

13:00 Finish

Introduction to Systemic Practice (5 day)



Stay Tuned.
Coming Soon!



Please arrive 10 minutes prior to the start time.

09:30 Start
16:00 Finish

Enhanced Systemic Skills



This course is



Stay Tuned.
Coming Soon!

Trainers



Please arrive 10 minutes prior to the start time.

09:30 Start
12:30 Finish

Hestia MARAC & Domestic Abuse Awareness training



Hestia's DA Awareness and MARAC Training offers a foundation of knowledge on key aspects of Domestic Abuse and how MARAC processes work to safeguard the vulnerable people we support.

The below topics are covered in the sessions:

DA Act 2021 and Types of Domestic Abuse
Overview of IDVA Service
DASH RIC
Fundamentals of MARAC and How to refer
Case Study Examples
Group Discussion and Q&A

Online

- 16th September 2026
10:30am – 12pm

Please arrive 10 minutes prior to the start time.

OTHER DATES:

- 16 DECEMBER 2025 (10:30 - 12:00)
17 MARCH 2026 (10:30 - 12:00)

Induction to Children and Young People's Service (CYPS)



This induction is for all new starters who are both permanent and agency staff who are employed within Children and Young People's Services. It is a mandatory requirement to attend. The inductions are held quarterly throughout the year. Please note, this induction is separate to the Corporate Induction.

This induction includes:

- Introduction to the Newham practice model 'Circles of Support' and Practice Obsessions
- An introduction to the components of Children and Young People's Services in Newham
- Mandatory training, i.e. data protection and governance
- Introduction to the Social Work Career Progression Pathway
- The Reflective Toolkit and Talking about Race and Ethnicity - Inclusive Language Guide - Invitation to 'Tackling Racism, Inequality and Disproportionality' (TRID) Steering Group.
- Supporting staff wellbeing
- Access to learning and development opportunities and resources

This CYPS Induction is to be booked with the Mandatory Half Day Systemic Training which happens a few days later- booking link is here [Event : Mandatory--Half-Day-Introduction-to-Systemic-Practice - 32016](#)

Facilitator

Chandni Tanna, Social Care Workforce officer and facilitators from across CYPS

In-person

17.11.25

02.02.26

17.04.26

Please arrive 10 minutes prior to the start time.

09:00 Start

17:00 Finish

Leadership offer

The Social Care Academy remain exploring leadership training for the 25/26 period, including relational working for managers.

❖ 'Developing Diverse Leaders' may be launched again but it at present unconfirmed.

❖ Apprenticeships

[APPRENTICESHIPS AND PROFESSIONAL STANDARDS | Intranet](#)

See for example:

[Operations manager / Skills England](#)

[Chartered manager \(degree\) / Skills England](#)

[Senior leader / Skills England](#)



Practice Learning Conversation (PLC) training workshop for practitioners/social worker/PA's



This PLC workshop is designed for social workers, PAs, and early help practitioners who have a PLC for a child or family they are working with. The workshop aims to support you in understanding how to prepare for your PLC, the questions asked during a PLC, the meaning of the grading, and the subsequent steps.

To facilitate detailed support and discussions, we have kept the workshop small. Whether you are new to PLCs or looking to refresh your knowledge, this session is for you.



Trainers

Quality Assurance team

Online

17.09.25

More Dates TBC

Please arrive 10 minutes prior to the start time.

09:30 Start

10:30 Finish

Practice Learning Conversation (PLC) training workshop for managers/auditors



This workshop is designed for managers who undertake the PLC. The aim is to support you with best practices in conducting an audit, including preparation, top tips, grading, and next steps after completing the PLC.

To facilitate discussions and questions, we have kept the numbers small. Whether you are new to completing our PLCs or would like a refresher, this workshop is for you.



Trainers
Quality Assurance
team

Online
18.09.25

Please arrive 10 minutes prior to the start time.

09:30 Start
10:30 Finish

Safe and Together Core training

Respect



We are excited to announce the Safe & Together™ Model CORE Training (Social Care Staff ONLY)

The Safe & Together CORE Training is designed to provide a skills-oriented foundation for domestic violence-informed practice for professionals directly supporting families affected by domestic abuse. Each day of training provides experiential classroom training focused on the following foundational practice areas: assessment, interviewing, documentation, case planning.

This **4-day course** will be delivered as live remote sessions via Microsoft Teams on:

CORE Training will teach you how to:

- Identify the impact of domestic violence on children and family functioning
- Create fact-based assessment of the perpetrators' behaviour patterns
- Partner with adult survivors of domestic violence
- Intervene with perpetrators
- Understand how domestic violence intersects with other issues like substance abuse and mental health.

Trainers

Respect facilitators

ONLINE

- **CORE79** – Oct 13th | Oct 14th | Oct 20th | Oct 21st (10am-4pm) | Deadline: 30th September 2025 (12:00)
- **CORE80** – Nov 10th | Nov 11th | Nov 17th | Nov 18th | Deadline: 28th October 2025 (12:00)

It is recommended to log in 5 minutes prior to the scheduled time.

10:00 **Start**

16:00 **Finish**

Safe and Together Overview



We are excited to be offering the Safe & Together™ Model Overview Training.

This one-day training provides participants with an introduction to and overview of the Safe & Together™ Model. The presentation provides participants with information about creating a domestic violence-informed child welfare system, the principles and components of the Safe & Together Model and information about the framework behind competency-building in child welfare around domestic violence. The training will be useful to anyone in the borough who comes into contact with families affected by domestic violence.

The training objectives are:

- To introduce a perpetrator pattern framework
- To introduce and understand the Safe & Together Model principles and components and how those guide practice in various roles
- To introduce how to use the Safe & Together Model as a way to en good practice in various roles, reduce risk effectively and achieve outcomes



Trainers

Respect facilitators

ONLINE

- October 06/07 (1-4pm) Deadline: 21st October 2024 (12:00)

It is recommended to log in 5 minutes prior to the scheduled time.

13:00 Start

16:00 Finish

[Click to book Safe-and-Together-Overview](#)

Supervision Reflective Workshops for Managers



Stay Tuned.
Coming Soon!

Trainers



Please arrive 10 minutes prior to the start time.

... by strengthening the supervisory component of social work.

Research in Practice Development day – Understanding and Supporting Children’s identities

Summary: Identity is unique to everyone. It is layered and continually changing.

During this workshop, participants will explore how identity develops and how to support identity development when working with children and young people.

The workshop aims to support participants to think about the challenges they face in exploring and writing about children’s identity in their work. Participants will have the opportunity to practice using tools that can be taken into their work with children and families.

Designed for: Family help and social care practitioners working directly with children and families.

research
in practice



Trainers

Research in Practice

Online

10.02.26

Please arrive 10 minutes prior to the start time.

Nominations will be via service managers. If you are interested, please speak to your service manager as there are limited places.

Corporate Learning and Development Offer



The Learning & Organisational Development team have on offer a wide range of [learning and development opportunities](#) including live online sessions on different topics. These range from; 'How to keep a virtual audience engaged' to 'What is imposter syndrome?' Please encourage colleagues to visit our intranet page to learn more about these.



Mandatory training



Everyone working for Newham is required to complete mandatory training, including agency workers and consultants. Your role and contract type will determine which courses or events are required. It is your responsibility to ensure that you have completed all mandatory training.

Each of the mandatory courses, and who should do them, has been approved as necessary by our corporate management team on the basis that it fulfils a legal safety requirement in relation to health or data and will protect you and the Council. Or, as in the case of the Corporate Welcome, it is an opportunity to meet the Chief Executive and the Mayor and learn more about the Council.

Please see the link below.

[Mandatory Training List.pdf \(sharepoint.com\)](#)

SUPPORT

FREQUENTLY ASKED QUESTIONS

[Frequently asked questions>](#)

HEALTH & SAFETY SUPPORT

Raise a request using the [Contact Health & Safety Form.](#)

HR LEARNING & ORGANISATIONAL DEVELOPMENT TEAM SUPPORT

Email:

hrlearning@onesource.co.uk

Mentoring



Mentoring - personal and professional growth for everyone

Mentor Connect, is our online mentoring platform that a number of colleagues are

already making great use of. Abi is strongly passionate about mentoring and would like everyone in the organisation to have the opportunity to be mentored or to mentor. If you would like to find out more before committing or would like to attend a briefing session, please see here.

[Mentor Connect at London cross-council partnership \(onpld.com\)](https://onpld.com)



Lunchtime Seminars – Preview of sessions

Wednesdays 13:00-14:00 online, term-time only



NEWHAM
SAFEGUARDING CHILDREN
PARTNERSHIP

| Lunchtime seminar title | Planned date | Facilitator | Description |
|---|--------------|---------------------------------------|--|
| Private Fostering | 24.09.25 | Nasim Ahmed, Private Fostering Lead | TBC |
| SGOs | 08.10.25 | Kuldip Kaur, SGO Support Team Manager | A quick practice guidance to the procedures in Newham for assessments to provide permanence children. The focus will be on the application and assessment process, for both Connected Carer and Special Guardian assessments. We will look at the good practice for viability and the full assessment of carers, as well as the final phases of assessments and the placement and support following the making of an order. |
| Harmful Practices | 26.11.25 | VAWG | This session will provide an overview of the different forms of Harmful Practices, including Forced Marriage, Honour-Based Violence, Female Genital Mutilation, Faith-Based Abuse, and Breast Ironing. We will also focus on how to identify these practices and conduct effective risk assessments. |
| Change Grow Live (CGL): Understanding Substance Use Trends Among Young People in Newham | 25.03.26 | Jacki Lute, CGL | <p>This one-hour comprehensive course is designed for youth workers, social workers, healthcare professionals, and legal authorities. It aims to provide a deeper understanding of the current themes and trends related to substance use and dependency among children and young people in the London Borough of Newham.</p> <p>Drawing on up-to-date data and statistics from Change Grow Live's Young People's Services, this session will explore the most commonly used substances in the borough, highlighting shifts in prevalence over time. The course will also examine how the modern, tech-driven social environment influences substance use—covering aspects such as glamorisation, online distribution, and the development of dependency.</p> <p>By the end of this course, professionals will be better equipped to recognise substance-related risks in young people, understand the broader context driving these behaviours, and support early intervention efforts.</p> |

Lunchtime Seminars take place every Wednesday - Individual invites to the sessions will be sent out monthly with topics.

Rights of Women training



[Training and events | Rights of Women](#)

Domestic Abuse Act 2021: protection for survivors in legal proceedings

Date: 10 September 2025, Wednesday (course full but there is a waiting list option)

This second session in our DA Act 2021 series., this course will take you through measures in Part 5 of the Act which promote the safety of survivors in the courts.
This includes:

1. Special measures
2. Prohibition of direct cross-examination in family and civil proceedings
3. Orders that can be used to prevent perpetrators applying for orders in relation to children without permission from the court, also known as “barring orders”

❖ **Supporting survivors with fact-finding hearings – 29/10/25 – Registration information added soon**

Please direct any questions to training@row.org.uk

The best way to hear about the trainings as soon as they are advertised is to sign up for the training and events mailing list.

To join, please email training@row.org.uk with the following information:

- Email address
- Job title
- Organisation
- Postcode of where your organisation is based

SUICIDE PREVENTION TRAINING

North East London Suicide Prevention Multi-Agency Training Hub offers free training for people working and living in Newham



SUICIDE PREVENTION TRAINING AND DEMYSTIFYING SELF-HARM

Suicide First Aid Lite Teaches the skills needed to identify someone who may be thinking about suicide. Four hour course for a range of practitioners including health, housing, social care, education, criminal justice, call centre operators, private, voluntary and public sector workers and community members.

To register visit: nelsuicidepreventiontraining.co.uk/sfalite/

Suicide First Aid Lite Youth Training delivered virtually. FA Lite Youth is comprised of 2 parts over half day. Knowledge needed to identify a young person who may be thinking about suicide and competently intervene to help create suicide-safety and support with coping, as a first aid approach. Mainly for people that work with and care for children and young people. **To register visit:** <https://nelsuicidepreventiontraining.co.uk/sfaliteyouth/>

Mental Health First Aid Youth This training provides the knowledge, skills and confidence needed to spot the signs of mental health issues in a young person, offer first aid and guide them towards the support they need. No prior knowledge of mental health needed and open to anyone over 16 years old. Course is delivered across 4 manageable bitesize sessions online across four days. **To register visit:** <https://nelsuicidepreventiontraining.co.uk/mhfa-youth/>

Mental Health First Aid Adult The Adult MHFA course qualifies you as a Mental Health First Aider, course accredited by the Royal Society of Public Health. Course is delivered across 2 days. **To register visit:** <https://nelsuicidepreventiontraining.co.uk/mhfa/>

SafeTALK: Suicide Awareness Face to face 3 and a half hour training to support people to know what to do if someone's suicidal by following the TALK steps – Tell, Ask, Listen and Keep-safe, and how to offer immediate help to someone having thoughts of suicide. **To register visit:** <https://nelsuicidepreventiontraining.co.uk/safetalk/>

Applied Suicide Intervention Skills Training (ASIST) A course for care-givers and key community members. It teaches suicide alertness and an easy to remember framework of practical skills to safely initiate, complete and follow-up on a full suicide intervention. ASIST training is an intensive 2 day face to face only course for care-givers and key community members. **To register visit:** <https://nelsuicidepreventiontraining.co.uk/asist/>

Demystifying Self Harm (Virtually Delivered) This course will allow the space for participants to have open conversations about self-harm, including unpacking our own feelings and attitudes around self-harm (including thinking about our own faith, beliefs, life experience) and acknowledge them so that we are informed of how they may present and impact the support we provide. **To register visit:** <https://nelsuicidepreventiontraining.co.uk/>

To visit the suicide prevention practitioner's resource:

[Suicide Prevention Training and Online Safety resources – Practitioners Resource – Newham Council](#)

SUICIDE PREVENTION TRAINING

North East London Suicide Prevention Multi-Agency Training Hub offers free training for people working and living in Newham



Suicide Prevention Training and Online Safety resources

Zero suicide prevention training

About the course: A 20 minute suicide awareness training. You will gain skills and confidence to help someone who may be considering suicide.

Who it's for: The training is recommended for anyone aged 16 and over. Anyone can learn how to have a potentially life-saving conversation.

What you'll learn:

- How to spot suicide warning signs
- How to have a conversation with someone you're worried about
- Where to signpost to for further support
- Suicide is preventable

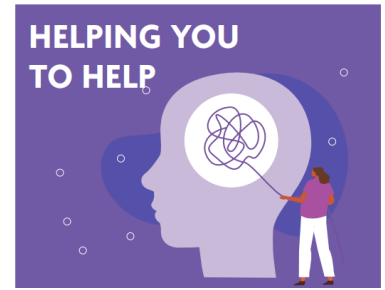
How long it will take: This training takes approximately 20 minutes to complete and you will get a certificate when you have completed the training.

Visit: <https://www.zerosuicidealliance.com/suicide-awareness-training>

[Suicide Prevention Training and Online Safety resources – Practitioners Resource – Newham Council](#)

SUICIDE PREVENTION TRAINING

North East London Suicide Prevention Multi-Agency Training Hub offers free training for people working and living in Newham



Zero suicide prevention training for university students

About the course: This suicide awareness training has been developed specifically for university students and includes information and scenarios that are related to experiences at university.

Who it's for: The training has been created for university students, their family and friends but can be taken by anyone over the age of 16.

What you'll learn:

Through the training you'll learn the skills to better understand suicidal behaviours so you can feel confident to:

- See the signs
- Say the words
- Signpost to support

The training aims to equip you with the skills and confidence you need to have a potentially lifesaving conversation.

How long it will take: The training takes approximately 20 minutes to complete and you will get a certificate on completion.

Visit: <https://www.zerosuicidealliance.com/suicide-awareness-training-uni-students>

[Suicide Prevention Training and Online Safety resources – Practitioners Resource – Newham Council](#)

Links to Useful Resources

Young People's Service – CGL

If you're a Newham-based professional working with Young People, here are the training and workshops we run.

[For professionals - Young People's Service - Newham \(changegrowlive.org\)](https://www.changegrowlive.org)

Listening to young people with care experience (2020) Free download

Carefree and Research in Practice formed a research partnership in 2018, supported by funding from the Listening Fund. Through a number of workshops and further conversations, Research in Practice has captured evidence related to Carefree's approach to supporting young people and young adults with care experience. This report aims to distil this evidence and deliver key messages on ways in which other organisations can improve the lives of people in and leaving care.

www.researchinpractice.org.uk/children/publications/2020/july/listening-to-young-people-with-care-experience-2020/

7-minute-briefings on the NSCP Website

Policies and Procedures

Which include:

- Adolescent Exploitation Strategy
- Escalation Policy
- Suicide Prevention Policy



Useful links and resources – Domestic Abuse and VAWG



- ❖ [Sexual Violence and Abuse - NIA | Ending Violence Against Women and Girls \(niaendingviolence.org.uk\)](http://niaendingviolence.org.uk) supporting girls age 11+
- ❖ [Abianda | young women, girls, criminal exploitation and violence | London](#)
- ❖ [London Black Womens Project | Domestic Violence | LBWP](#) includes access to counselling (therapists provide sessions in various languages languages), sexual harassment support, legal services, training (I have attached the referral form)
- ❖ Victim Support Children's Services [Children and young people - Victim Support](#)
- ❖ GALOP LGBTQ+ support for young people [LGBT+ Young Persons Advocate - Galop](#) and [Children and young people - Galop - Galop](#)
- ❖ [Maia and Lift - Advance Charity](#) (for young women and girls at risk of DA)
- ❖ Some interesting Safe Lives CYP and DA evaluations
[Young people and domestic abuse spotlight - SafeLives](#)

- ❖ [Free FGM Training Online | Recognising & Preventing FGM Free Course | Virtual College \(virtual-college.co.uk\)](#)

[Ascent Partnership - Solace Womens Aid](#)

Including Advice, Counselling, and group work.



Useful links and resources – other



❖ SEND e-learning training (free):

<https://learning.councilfordisabledchildren.org.uk/>

❖ National Youth Agency e-learning training:

[Continuing Professional Development \(CPD\) - National Youth Agency \(nya.org.uk\)](http://www.nya.org.uk)

Some of the above is free and some has a cost. For both links above staff need to create an account to access.

❖ Modern slavery

- [Modern slavery training: resource page - GOV.UK \(www.gov.uk\)](http://www.gov.uk) – there is free e-learning on here, as well as videos, booklets, tool kits and more.
- E-learning from links above: [E-Learning Child Victims of Modern Slavery - NPCC Modern Slavery & Organised Immigration Crime Programme \(npcc-msoicu.co.uk\)](http://npcc-msoicu.co.uk)
- [E-Learning First Responder Training - NPCC Modern Slavery & Organised Immigration Crime Programme \(npcc-msoicu.co.uk\)](http://npcc-msoicu.co.uk)
- [Modern Slavery Awareness booklet \(publishing.service.gov.uk\)](http://publishing.service.gov.uk)

❖ Intra-familial child sexual abuse

Free 90 min online training

[eLearning | CSA Centre](http://www.csa-centre.org.uk)



The following provide some information on some concerns and themes which impact our children and families.



Equality and Diversity



Training provided by the NSCP may not explicitly discuss equality and diversity, however,

- Please be aware of assumptions made about case studies used
- Check in with your own biases (we all have some) and where you might make assumptions about the social GGGRRRAACCCEESS (Gender, Gender Identity, Geography, Religion, Age, Ability, Appearance, Class, culture, Ethnicity, Education, Sexuality, Spirituality)
- Consider what adjustments you should make for family members with additional needs, e.g. around language barriers, transport issues, venues etc.
- Challenge any prejudices about race, age, gender, sexuality, religion, or any of the social GGGRRRAACCCEESS



Social GRRRAACCEEESSS:

Gender, Geography

Race, Religion

Age, Ability, Appearance

Culture, Class

Education, Employment, Ethnicity

Spirituality, Sexuality, Sexual orientation

<https://practice-supervisors.rip.org.uk/wp-content/uploads/2019/11/Social-GRRRAACCEEESSS-and-the-LUUUTT-model.pdf>

Intersectionality



..... is the interconnected relationship of social categorisations such as race, gender, and sexual orientation together with individual vulnerability and adversities suffered by the individual. It is important to consider the potential to learn from issues of ‘intersectionality’ as some children feature more (or less) in the statistics, for example, Black boys and increased incidents of serious youth violence in London. Racism, bias, stereotyping, or cultural misunderstanding operate at the individual, institutional and societal levels, both consciously and unconsciously – which may result in some children being more likely to come to the attention of child protection services. Equity is an essential consideration for our services, not only in our actions but also in our decision-making process.

Intersectionality is a tool for analysing how different forms of oppression, inequality and disadvantage (e.g. ageism, racism, sexism, ableism, heterosexism, classism) interact and intersect to influence lived experiences (Bernard, 2020). This understanding offers a lens to see someone better and to offer better practice, both in practice and crucially in our working environments.

[What is Intersectionality?](#)

Adultification....

.....is a harmful practice where children are treated as if they are adults, often incorrectly. This means these children are viewed as less innocent and more adult-like, which can lead to feelings of being over-policed and unsafe at school. The Commission on Young Lives in England (2022) reported that Black children are more likely to face harsher punishments in school due to a process called "Adultification". It can lead to Black children being treated like criminals and taking on adult responsibilities at a young age.

This can reduce the responsibility of professionals to safeguard and protect children while increasing children's responsibility to protect themselves. Addressing the issue of Adultification and premature sexualisation of children is crucial. Adultification can also cause children to behave more maturely than their peers, which may not be developmentally appropriate.

[Adultification bias within child protection and safeguarding \(justiceinspectorates.gov.uk\)](https://www.justiceinspectorates.gov.uk)

[Jahnine Davis explains the adultification bias after black schoolgirl strip searched by police](#)

Adverse Childhood Experiences (ACES)

ACE's are events that can have a potentially traumatic impact on children during their formative years (0-17 years). These experiences include violence, abuse, neglect, witnessing violence in the home or community, and having a family member attempt or die by suicide.

Additionally, aspects of a child's environment, such as growing up in a household with substance use problems, mental health problems, or instability due to parental separation or household members being in jail or prison, can also undermine a child's sense of safety, stability, and bonding.

It's important to note that the examples provided are not an exhaustive list of adverse experiences - many other traumatic experiences could impact health and well-being, such as not having enough food to eat, experiencing homelessness or unstable housing, or experiencing discrimination.

ACEs are linked to chronic health problems, mental illness, and substance use problems in adolescence and adulthood, and can also have a negative impact on education, job opportunities, and earning potential. However, it is possible to prevent ACEs from occurring.

<https://mft.nhs.uk/rmch/services/camhs/young-people/adverse-childhood-experiences-aces-and-attachment/>

Barnardo's training sessions



**Changing childhoods.
Changing lives.**

NCTC Awareness Raising Sessions: [Training - NCTC - Barnardos](#)

Modern Slavery Act inc section 45

- **Date:** Thursday 16th October 2025
Time: 09:30 AM - 10:30 AM
Cost: FREE
Where: Online - Book here: [Modern Slavery Act inc section 45 - NCTC - Barnardos](#)

NRM part 1 - overview

- **Date:** Thursday 11th September 2025
Time: 1:30 PM - 2:45 PM
Cost: FREE
Where: Online – Book here: [NRM Training - NCTC - Barnardos](#)

Introduction to ICTG Service

- **Date:** Wednesday 3rd September 2025
Time: 11:00 AM - 12:00 PM
Cost: FREE
Where: Online – Book here: [Introduction to ICTG Service - NCTC – Barnardos](#)

If you're unable to book onto the above dates, alternative dates are available on the Barnardo's website