



FIRST FRIDAY SAFEGUARDING PARTNERSHIP FORUM

For all in Education, Health, Children's Social Care, Police, Adult and other public services who are members of the Newham Safeguarding Children Partnership



Agenda July 2023

Item	Presenter
<p>Welcome and Introduction</p> <p>Recap</p> <p>Standing items</p> <ul style="list-style-type: none"> 7 min Briefing Update Feedback Plan reminder Live Sign 	<p>Natalie Newton</p> <p>NSPC Service Manager</p>
<p>https://www.youtube.com/watch?v=wmVVeJxJvo</p> <p>Adolescent Safeguarding Handbook Launch Video</p>	<p>Video</p>
<p>Adolescent Safeguarding in London handbook – a useful resource</p>	<p>Michelle Edwards</p> <p>Head of Service</p> <p>Youth Offending</p>
<p>Return Home Interview (RHI)</p>	<p>Gemma Wright</p> <p>Intensive Youth Work & RHI Snr Manager</p>
<p>https://www.youtube.com/watch?v=PubJL_Ck1W4</p> <p>Introduction to private fostering</p>	<p>Video</p>
<p>Private Fostering Awareness Week</p> <p>Newham's Lead</p> <p>Any Questions</p>	<p>Nasim Ahmed</p> <p>Private Fostering Lead, Operations & Safeguarding</p>
<p>Courageously Superior Video</p>	<p>Kathy Dee</p> <p>Early Help and Mental Wellbeing Practice Lead</p>
<p>Training plan for 2023-2024</p>	<p>Sheila Leighton</p> <p>Safeguarding Lead</p>
<p>Child Q updated the report</p> <p>a report into progress made by the Met and partners following the "strip searching" of a child</p>	
<p>Some homework for September Forum</p>	
<p>Closing Remarks</p>	

Dates of Future Meetings:

8th September 2023, 3rd November 2023, 12th January 2024, 8th March 2024, 3rd May 2024, 5th July 2024

May Recap

Newham Child Exploitation Practice Guidance

7 min briefing

Extra Familial Harm

Child Exploitation Appropriate Language Guide 2022.pdf (childrenssociety.org.uk)

Victim blaming language - YouTube

LFB's changed approach to Home Fire Safety Visits Partner Agencies

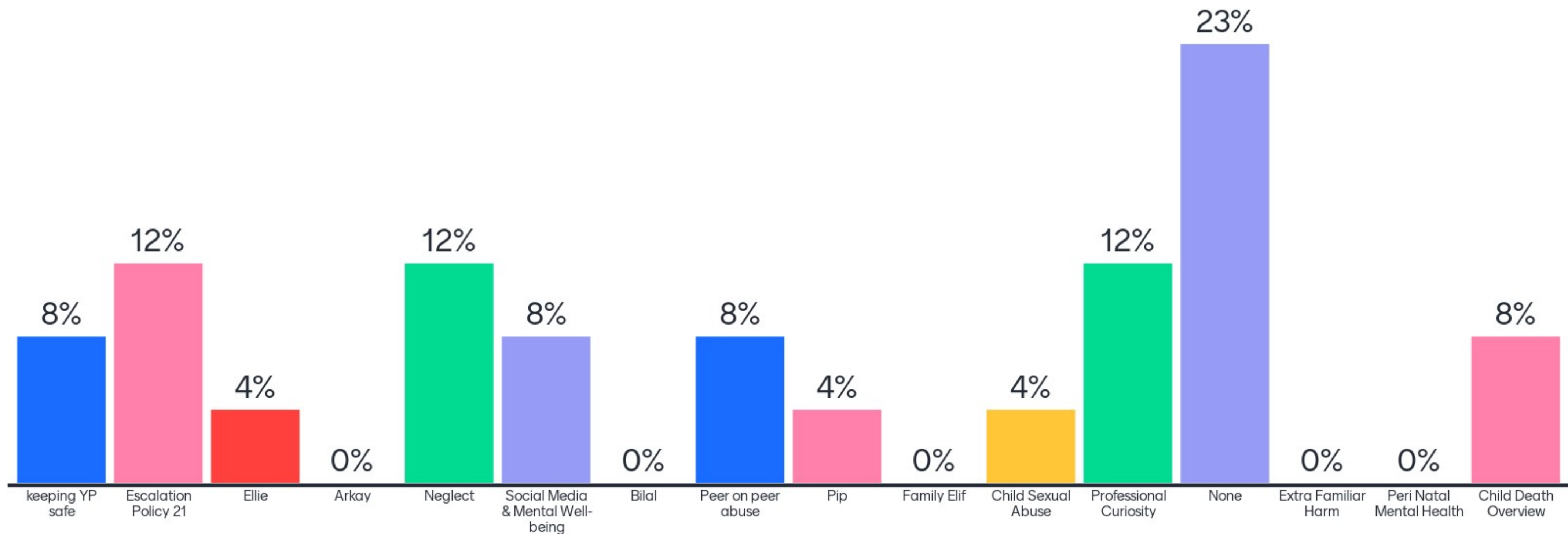
Feedback from NSCP TNA March 2023 and Training Available 2023



Menti.com – code 3882 6222



What 7 minute briefings have you used ?





Name of section and team Contact details
Please ensure you keep a copy of this discussion and plan for your records

Feedback Form

What actions have been agreed to improve practice?
Please ensure you keep a copy of this discussion and plan for your records

Identify the learning or recommendations that are relevant to your team and your team's discussion on those points

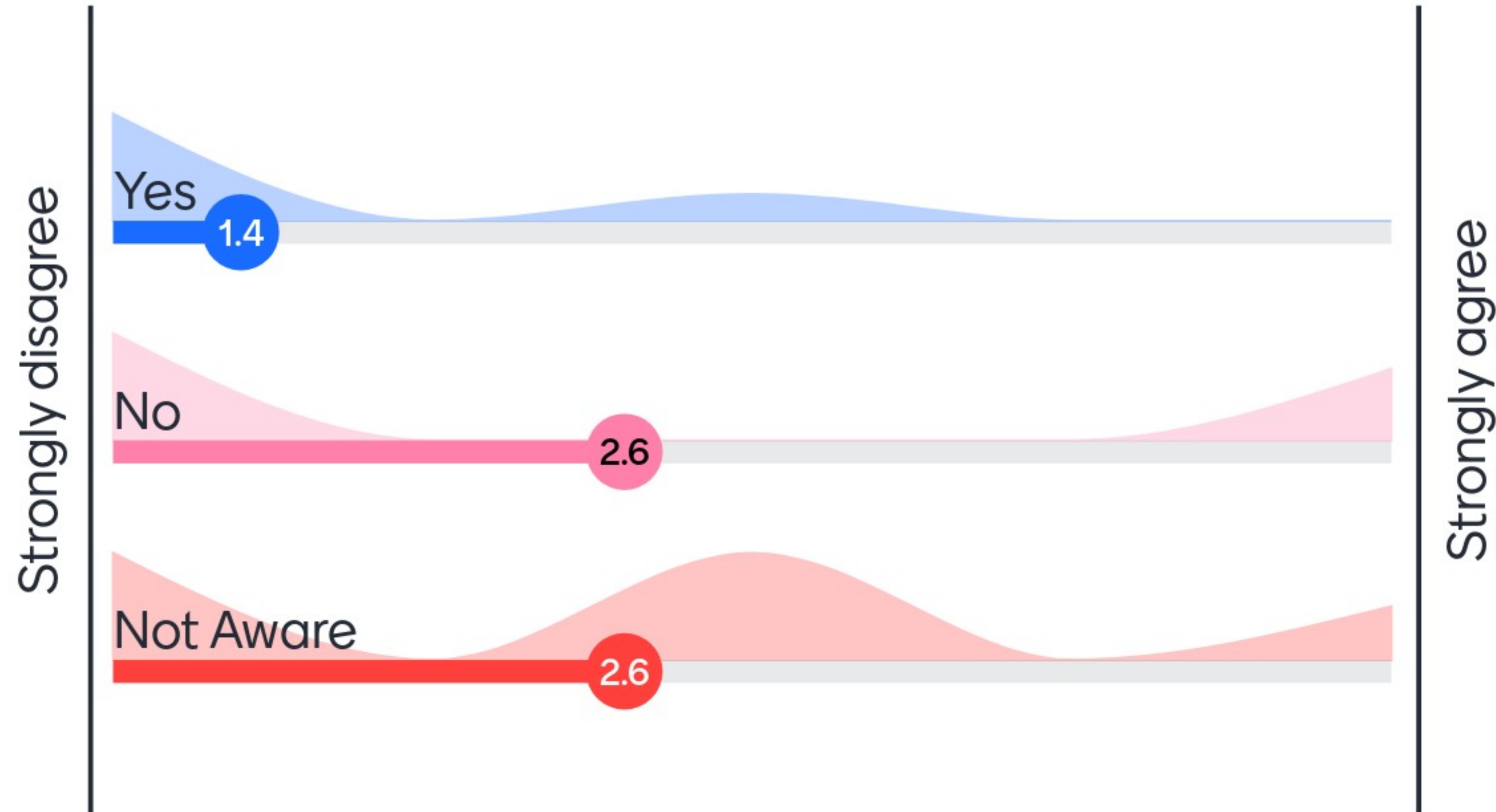
- 1
- 2
- 3

7-Minute Briefing - Feedback Plan

Title of 7-Minute Briefing.....
Name of organisation..... Team Manager

What need to happen?	Who will do it?	By when?	How will you know when this has been done?	How will you know if it has worked?

Have you completed a feedback form?





Confidential Area

Home

Children & Young People

Parents & Carers

Professionals

Community

Early Help

Learning Zone

About

7 Minute Briefings – Confidential Area

This password protected area contains learning related to Newham specific cases. To document your learning you can access this tool, which can evidence and track the learning with in your agency. This area should be used to share good practice and learning within Newham.

Please add in the same the provided log-in password to watch all videos.

Anna



Ellie



Keeping Young People Safe



How to access the secure 7 minute briefings



NEWHAM
SAFEGUARDING CHILDREN
PARTNERSHIP

 Mentimeter

Email the LSCB.administrator@newham.gov.uk using the subject title: *Access to secure 7 minute briefings*

Please send your *feedback* to the same email address with details of who the briefing has been shared with and how the learning is being used to improve safeguarding practice.



Live Sign up

- Take this opportunity to request access to the confidential site.
- This comes with responsibilities –
 - That you disseminate the information within your establishment
 - Complete action plan to document and evidence change and outcomes
 - Share your action plan with the NSCP



Adolescent Safeguarding Handbook Launch Video

Adolescent Safeguarding in London handbook – a useful resource

Michelle Edwards

Head of Youth Offending, Operations & Safeguarding



Ask me anything

0 questions

0 upvotes

Return Home Interviews Overview

Gemma Wright
Intensive Youth Work & RHI Snr Manager

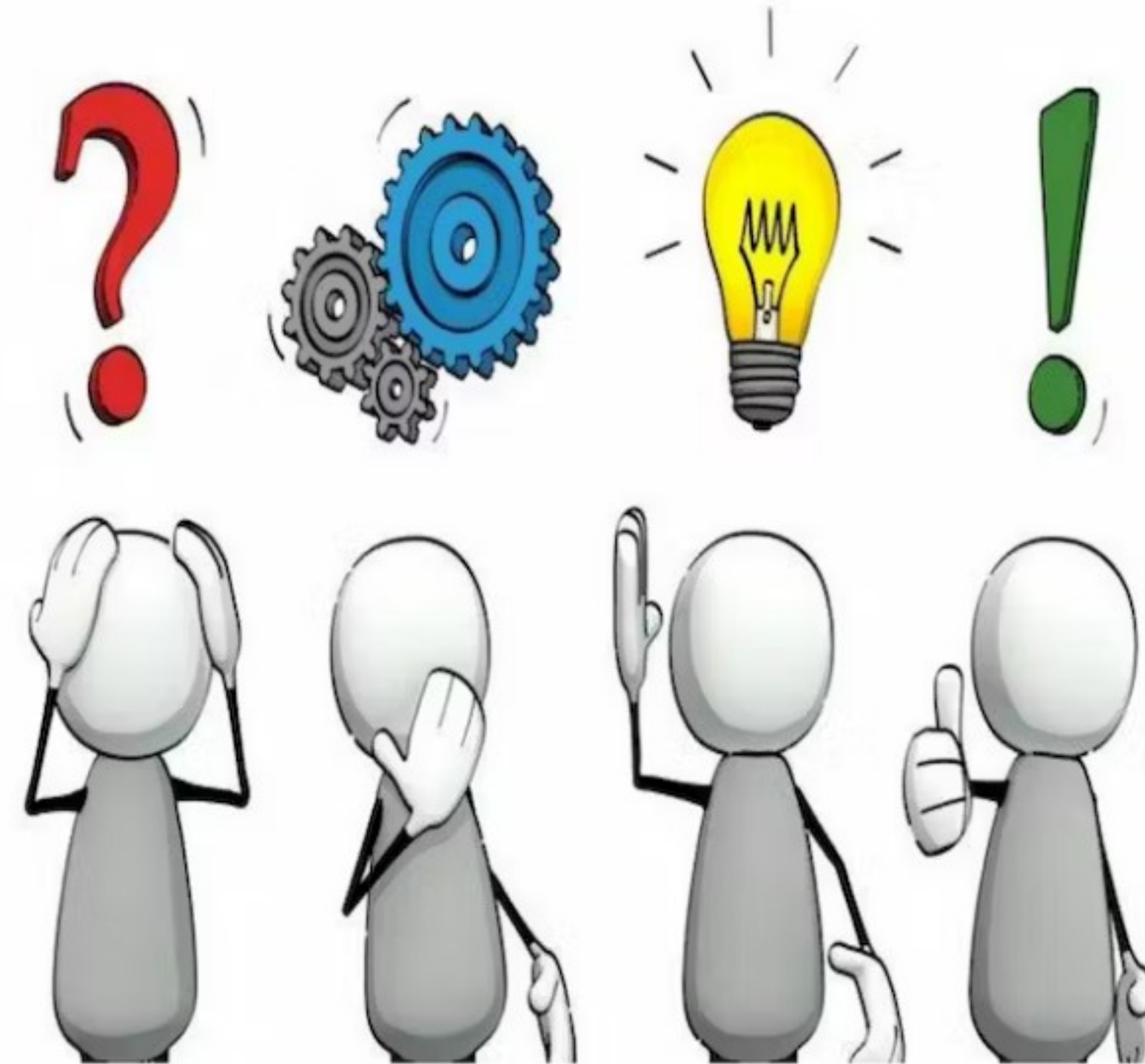


Return Home Interview



What is a Return Home Interview (RHI)?

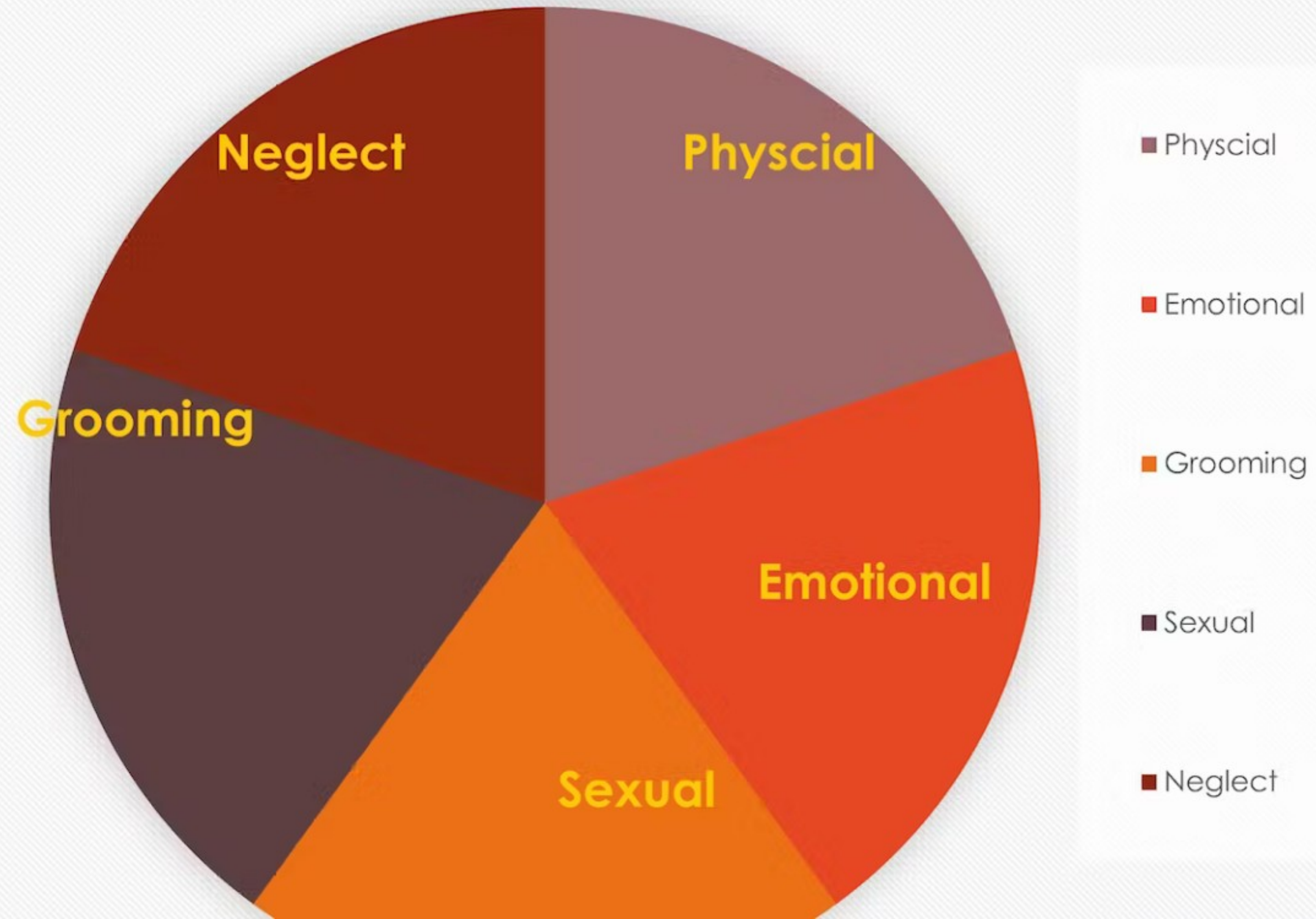
- ▶ An RHI is an in-depth conversation with a young person who has returned from a missing episode.
- ▶ The RHI should be completed by a professional who is highly skilled, trained and independent to a child's care planning.
- ▶ An RHI should be offered to every young person on their return from every missing episode.
- ▶ An RHI should not only look to establish the reasons why a child has gone missing but also how we can work actively with the child and professional partners to drive down identified risks via the follow-on work offered.



Who do we work with.....

- ▶ All children who have returned from a missing episode aged under 18yrs old in Newham (not CLA by other LAs)
- ▶ We are currently offering RHI's to children who reside in the borough and for children who are looked after by Newham LA but currently reside outside the borough/across the UK.
- ▶ The majority of children being offered an RHI are male by gender when looking at gender re the number of individual children not the number of missing episodes
- ▶ We acknowledge that for many of the children we work with there are on going concerns for their safety/welfare and we accept that they live with a range of complex care needs.

Identifying Risk



The Theory.....

- ▶ We use and are underpinned by the Relational SW Model in that we understand and support the value of building trusted relationships with our children. We are relentless in our approach to connecting with our children whilst always maintaining the highest level of respect and diplomacy.
- ▶ We also understand that Newham CSC operate using the Systemic Model of Practice which is very much aligned with the Trauma Informed Practice we adopted and will continue to operate within.
- ▶ We know and accept that Newham LA uses the 'Heart' Model which gives us a shared understanding the expected organisational principles/behaviour. All of the above theories/approaches/models work well together and can be used interchangeably within our practice.



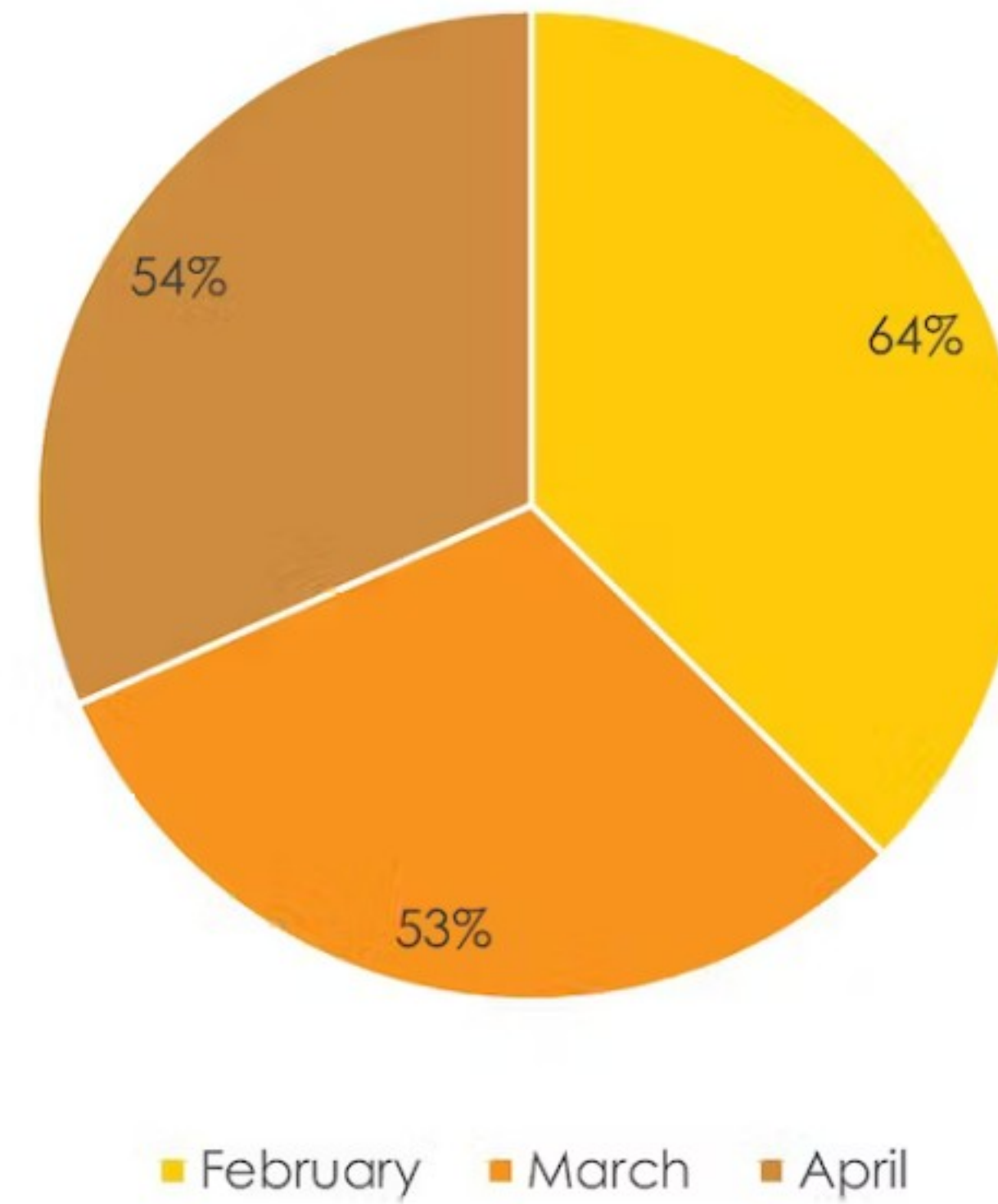
Good News Story

- ▶ Good News Story – RHI Service/ASW/Virtual School
- ▶ Child: 'Erick'
- ▶ Age:17
- ▶ Ethnicity: Dual Heritage Black Caribbean and White British
- ▶ RHI Worker: Mercy
- ▶ Case Overview
- ▶ Erick is a young man who has been cared for by Newham LA since he was 16yrs old. He is currently living in an unregulated residential setting and has been since he was 16yrs old. Over the past 6 months concerns have gradually escalated resulting in Erick encountering multiple missing episodes and in Sep 2019 Erick was found in possession of Cannabis and then Possession of class A drugs and was arrested for PWITs – Erick was offered an RHI following each episode and engaged with almost all. However, in October Mercy established that Erick was presenting with a low mood and appeared very frustrated, the 'pull' and 'push' factors were identified as the following.
- ▶ Accommodation – didn't like the setting/environment and found it restrictive.
- ▶ Relationship with is ASW.
- ▶ Lack of positive activities.
- ▶ Wanted to access therapeutic intervention.

- ▶ Mercy approached this by exploring with Erick how he felt we could support him best in reaching a resolution, he wasn't sure and so was offered a meeting to address this with his ASW but at that time was so angry that he wasn't willing to do this. Mercy then offered Erick the opportunity to engage with an Advocate so that she could assist from an objective position. This resulted in him then having a meeting with her during which all of his concerns were ascertained/confirmed. He was given the opportunity to set a meeting re date/time/venue and this led to him feeling more informed, supported and confident to have a meeting with his ASW.
- ▶ So What.....
- ▶ Following this meeting Erick thanked the advocate and was so happy that he hugged her as she left the building. This course of action led to Erick and his ASW's relationship being somewhat restored in that he felt happy to continue working with him as opposed to being allocated to another SW. Erick was referred to CAMHS, offered alternative accommodation to a shared accommodation setting on him turning 18yrs, he also got additional support from the Virtual School Worker in identifying an apprenticeship in Construction that Mercy supported him with by attending the college with him. Erick managed to get a place on this course and is now attending regularly and is very happy. The missing episodes have not stopped entirely but have reduced significantly.

Data Breakdown

Date	Overall Accepted	Completed By RHI	Percentage
February	114	59	64%
March	151	80	53%
April	125	68	54.4%



Themes/ Summary

- ▶ There is still a concern around unreported missing when it comes children who reside at home not being reported missing to police when there whereabouts is not known.
- ▶ Parenting capacity remains a concern for parents/carers caring for our missing/vulnerable children/YP continue to report that they are struggling.
- ▶ Pull/Push Factors – money, spending time with friends/family, relationship based (girlfriend/boyfriend model often being used by exploiters') desire to be loved/cared for, additional needs impacts on judgement re safe friends/peers association/places and spaces/lack of essential items such as food/shelter/clothing.
- ▶ Mapping missing/vulnerable young people – important that these meeting are well attended and that information is shared with partners/regularly reviewed.
- ▶ Understanding the importance of a return home interview and role of an RHI officer
- ▶ Inviting the allocated RHI officer/ Deputy manager to multi agency meetings.

Thank You



Ask me anything

0 questions

0 upvotes

Private Fostering Awareness Week Newham's Lead

Nasim Ahmed

Private Fostering Lead, Operations & Safeguarding





Private Fostering

prai•vət fɒs•tər•lɪŋ

Private fostering is the term used to describe an often informal arrangement where a child under 16 (if disabled, under 18) is cared for and lives with an adult who is not a close relative (a grandparent, brother, sister, aunt, uncle or step-parent) for 28 days

Introduction to private fostering



Private Fostering Presentation First Friday Forum July 2023

**Nasim Ahmed
(Private Fostering Lead)**

WE ARE NEWHAM.

**People at the Heart
of Everything We Do**



How are Children 'Looked After' By Others?



There are many routes for children and young people to live with someone who is not their parents or legal guardian.

- It could be via **private arrangements** between the parent and friend or family member.
- It could be via **private court proceedings** – the person may share parental responsibility with parents and **have Child Arrangement Order or Special Guardianship Order**.
- It may be via voluntary accommodation **known as Section 20**. Children over 16 who are homeless and parents are refusing to have them return can sign their own agreement.
- It may be via **public care proceedings** where the Local Authority seeks via **EPO or Interim Care Order** to share parental responsibility with the parents.
- When assessments are concluded- proceedings end on Care Order and child remains 'looked after'.

WE ARE NEWHAM.

People at the Heart
of Everything We Do



Private Arrangements



Are all '**private arrangements**' treated the same?

Does the '**State**' have any interest in who is looking after a child when the child is **NOT** 'Looked After' or been Looked After by the Local Authority?

WE ARE NEWHAM.

People at the Heart
of Everything We Do



What can we remember about this child?



Mentimeter



WE ARE NEWHAM.

People at the Heart
of Everything We Do



Victoria Climbié..



The most high profile case was the death of Victoria Climbié in February 2000.



Victoria Climbié was a privately fostered child.

- She was sent from the Ivory Coast to the UK by her mother, for a “**better life**”.
- Victoria lived with her ‘great aunt’ (Marie Therese Kouao) and her partner (Carl Manning).
- In February 2000, Victoria died from neglect and abuse at the hands of her private foster carers.
- Despite coming into contact with health, police and social services, and on several occasions was taken to hospital, her abuse was not discovered until her death.

Victoria’s tragic death led to a public inquiry conducted by Lord Laming, which resulted in:

- Implementation of the ‘Work Together’ to safeguarding children.
- Implementation of the Local Safeguarding Children Board (LSCB).
- Implementation of a number of legislative framework.

WE ARE NEWHAM.

**People at the Heart
of Everything We Do**



Relevant Legislation And Guidance On Private Fostering Arrangements.



- The Children Act 1989 and the amendments are contained within the Children Act 2004.
- The Children (Private Arrangement for Fostering) Regulations 2005 .
- National Minimum Standards.
- 'Working Together' To Safeguard Children.
- Guidance on the Children Act 1989: private fostering.
- The Children Act 1989 Part IX – “PRIVATE ARRANGEMENTS FOR FOSTERING CHILDREN”.
- Children Act 1989 Schedule 8 – “PRIVATELY FOSTERED CHILDREN”



Local Authority's Duties.



The National Minimum Standards for Private Fostering sets out a number of standards to be met by all Local Authorities in discharging their duties which cover the following areas:

- ☐ Statement of Purpose;
- ☐ Notification;
- ☐ Safeguarding and promoting welfare;
- ☐ Advice and support;
- ☐ Monitoring and compliance.

For further information on PRIVATE FOSTERING - SEARCH

<https://www.newham.gov.uk/children-families/private-fostering>

WE ARE NEWHAM.

People at the Heart
of Everything We Do



Homes for Ukraine - Guidance On Unaccompanied Ukrainian Minors.



- **In July 2022**, the government published new Guidance that allows children and young people **under 18** to come to the UK from Ukraine without their parent or legal guardian (unaccompanied). This also includes children and young people who travel with an accompanying adult.
- The Guidance specifies that these children / and their care arrangement will be assessed under the **Private Fostering Framework**.
- Guidance for Councils regarding unaccompanied minors from Ukraine (UAM) is detailed at:

[Homes for Ukraine: Guidance for councils \(children and minors applying without parents or legal guardians\) - GOV.UK \(www.gov.uk\)](https://www.gov.uk/guidance/homes-for-ukraine-guidance-for-councils).

WE ARE NEWHAM.

People at the Heart
of Everything We Do



Local Authorities Duties - Promoting Private Fostering Awareness.



- The Local Authority (LA) have a statutory duty under the Children Act (CA)1989, inserted by Section 44 C.A 2004, and the Children (Private Arrangements for Fostering) Regulations 2005 to:
- Promote awareness within their Local Authority and community about Private Fostering Arrangements and of the Notification Requirements to the LA.
- Section 44, Children Act 2004 places duties on all agencies who are in contact with children to Notify the Local Authority of a Private Fostering Arrangement that comes to their attention.
- Agencies have a duty to advise the private foster carer, parents or legal guardians to notify the LA of a proposed / actual private fostering arrangement that they become aware of.
- Section 44, CA 2004 places duty on LA -to satisfy themselves that the welfare of privately fostered children within their area is being satisfactorily safeguarded and their welfare is promoted.

WE ARE NEWHAM.

People at the Heart
of Everything We Do



Notification Requirements of Private Fostering Arrangements.



Children (Private Arrangements For Fostering) Regulations 2005:

Regulation 3(1) requires that a person who proposes to privately foster a child must notify the LA at least six weeks prior to the care arrangement is to begin or immediately if the care arrangement is to begin within 6 weeks.

Regulation 3(2) requires that any person, including a parent or legal guardian involved in arranging a child to be privately fostered (such as a language school,) must notify the LA immediately.

Regulation 3 (3) requires parents or legal guardians to notify the appropriate local authority immediately of the proposal of private fostering arrangement or one which will be commencing.

Failure to notify the LA is an offence. (Regulation 6. 2005 Regs).

WE ARE NEWHAM.

**People at the Heart
of Everything We Do**



Legal Definition of Private Fostering



A Private Fostering Arrangement is when a child under the age of 16 (or 18 if disabled) is cared by someone who is not their parent or a 'close relative' for 28 days or more (Children Act 1989 s.66).

A Private Fostering Arrangement is essentially one that is made 'privately' by a parent or a legal guardian without the involvement of the Local Authority.



Who are the 'Close Relatives'?



The Childrens Act 1989 defines 'close relative' as:

- Step-parents (by marriage, full or half blood,)
- Grandparents
- Aunt / uncle (whether of the full or half blood by marriage or civil partnership)
- Siblings

***If a child resides with any of the above determined 'close relatives', then this is NOT a Private Fostering Arrangement.**

***However, a 'close relative' may not have PR, therefore, may be advised to seek legal advice to secure PR where appropriate.**

WE ARE NEWHAM.

**People at the Heart
of Everything We Do**



Who can be a Private Foster Carer?



A Private Foster carer can be an extended family member such as:

- Cousin
- Great aunt / uncle.

Other adults who can be a P.F carer:

- A family friend
- Neighbour
- Teacher
- Church pastor
- The parent of a friend of the child or
- Stranger.

*If a child resides with any of the above adults for 28 days or more, it is a Private Fostering Arrangement- **NOTIFY THE MASH TEAM IMMEDIATELY.**

WE ARE NEWHAM.

People at the Heart
of Everything We Do



Examples of Private Fostering Arrangements



Children who are sent from abroad to live with another family in the UK for a 'better life'.

Children who may have been trafficked for purpose of 'exploitation' and live with unknown adults.

Unaccompanied minors / migrant children (UASC) staying with unknown contacts upon entry into the UK.

Homes for Ukraine- Unaccompanied Minors.

Children who are brought into the UK with a view to adoption, circumvented inter country adoption processes and immigration laws.

Children of prisoners placed with 'distant relatives'.

Children who are in Independent / boarding schools and stay with another family (i.e. a host family) during their school holidays.

Children who attend faith or language schools and stay with host families, distant relatives or others during term times.

Children residing in informal 'child minding' care arrangements (have overnight stays) which exceeds 28 days.

Children who live with another family because their parents / legal guardians are terminally ill, hospitalised, live / work outside London or Overseas.

A teenager who is living with a friends family due to conflicts within their family home.

WE ARE NEWHAM.

People at the Heart
of Everything We Do



Safeguarding Privately Fostered Children Is Everyone's Responsibility!



Children and Young People in Private Fostering Arrangements are highly vulnerable.

- They are living away from home, away from their parents / legal guardians.
- **Often, no one in the UK is exercising PR for them.**
- They are potentially exposed to various kinds of child abuse, exploitation, human trafficking, child slavery, benefit fraud etc.
- Unlikely to identify themselves as victims of **'trafficking'**.
- Carers may claim to have **'legal guardianship'**, but often cannot produce any legal documents to confirm their **identity, relationship or guardianship.**- In these situations-

SEEK ADVICE FROM PRIVATE FOSTERING TEAM / NOTIFY THE MASH TEAM.

WE ARE NEWHAM.

People at the Heart
of Everything We Do



Impact of Covid 19 Pandemic on Notifications / Statistics.



There is a national decline in the numbers of privately fostered children being notified to the Local Authorities.

COVID 19 Pandemic has significantly impacted on notifications levels.

Between April 2022- April 2023 only **13** private fostering notifications were received by the MASH compared to **41** notification during 2019/2021.

In Newham, there are approximately **86.085** children and young people
Only 9 privately fostered children are currently known to the LA.
WE KNOW THERE ARE MANY MORE!

***Private Fostering Awareness Week in Newham is between -17th to 21st July 2023.**

***This is a National P.F Awareness week to increase Notifications across all Local Authorities.**

WE ARE NEWHAM.

**People at the Heart
of Everything We Do**



'Working Together' to Increase Notifications to LA



Training are delivered to:

- Newham Safeguarding Children's Partnership (**NSCP**) **3 time a year.**
- Early Help Partnership and Designated Safeguarding Leads (DSL) forums, NAPH and NASH meetings for Head / Deputy Heads. **Twice a year.**
- 'In Year' Common School Admissions Form** has PF questions /triggers on the Guardian Section with a hyper link to PF Webpage.
- GP Safeguarding Leads Partnership meetings. **Twice a year.**
(GP Registration Form is being reviewed to include PF indicators; although there has been a delay in the progress).
- All CYPS Teams / Service Meetings (MASH, Assessment, Intervention, LAC and DCYP, YOT, New Starters Induction Programme, First Friday Multi Agency Forum).

WE ARE NEWHAM.

**People at the Heart
of Everything We Do**



What can we DO 'Better' !



Better 'Working Together'

Better 'visibility' of children living in Private Fostering Arrangements.

Better communication between partner agencies to 'identify' and 'notify' children in these care arrangements to **MASH** Team.

Better awareness of the **legal framework** of what constitutes Private Fostering Arrangement.

Better at challenging information about who the child lives with.

Better at identifying potential child trafficking, CSE, abandonment FGM and hidden abuse.

Remember the starter exercise about **BEING CURIOUS!**

EMPHASIS **MUST** BE ON SAFEGUARDING CHILDREN THROUGH **CURIOSITY** AND UNDERSTANDING OF THEIR '**LIVED EXPERIENCES**' RATHER THEN A VALUE JUDGMENTS ON **PRIVATE ARRANGEMENTS** MADE BY FAMILY MEMBERS.

WE ARE NEWHAM.

People at the Heart
of Everything We Do



Local Authority's Duties Following a P. F Notification.



Notification, Assessment and Monitoring Compliance.

- Undertake an initial assessment within **7 working days** of Notification to confirm PF Arrangement.
- Undertake a Statutory Assessment within **45 working days**- focussed on the Assessment Framework (Child's Needs, Parenting Capacity, Environmental Factors and any safeguarding issues), carry out DBS and Agency checks and conclude with a recommendation on the '**Suitability**' of the care arrangement.
- If there are concerns about the welfare of the child in the care arrangement, actions will be taken by the local authority to safeguard and promote the welfare of the child or young person.
- Provide information and advice to the privately fostered child and private foster carer according to their needs and on parental responsibility matters.
- Undertake **6 weekly Regulation 8 visits within 1st year of arrangement and 12 weekly visits from 2nd year and onwards** to monitor the private fostering arrangement.
- Conduct six monthly **Private Fostering Panel** which reviews all private fostering arrangements known to the LA with particular **focus on seeking permanency (i.e CAO, SGO)** for children who are deemed to be in long term care arrangements.

WE ARE NEWHAM.

**People at the Heart
of Everything We Do**



HOW TO NOTIFY US?



Raise a Notification to Children's Social Care MASH TEAM

NEWHAM MASH PORTAL:
www.newham.gov.uk/mash

https://azcareportal-live.newham.gov.uk/aztriageportal/jsp_mash/admin/login.jsp

EMAIL: MASH@newham.gov.uk

MASH GOLDEN NUMBER: 0203 373 4600

Azeus Helpdesk – 0203 373 3383 for any issues with the portal or registration

For further information on Private Fostering- SEARCH

<https://www.newham.gov.uk/children-families/private-fostering>

WE ARE NEWHAM.

**People at the Heart
of Everything We Do**



Private Fostering Team Contact Details



Nasim Ahmed – Private Fostering Lead - 0203 373 0515 (Mon- Wed)
Nasim.ahmed@newham.gov.uk

Mark Thompson, Practice Leader Fostering Support Team- 0203373 4406 (Mon- Fri) **Mark.thompson@newham.gov.uk**

Mussarat Gul- Placements Service Manager. (Mon- Thursday)
Mussarat.Gul@newham.gov.uk

Barbara Stephens– Supervising Social Worker (Mon-Fri)
Barbara.stephens@newham.gov.uk

Fostering Support Team Duty- 0203 373 3844 (Mon- Fri)

WE ARE NEWHAM.

**People at the Heart
of Everything We Do**



Any Questions?



 Mentimeter



WE ARE NEWHAM.

**People at the Heart
of Everything We Do**

Ask me anything

0 questions

0 upvotes

Kathy Dee

Early Help and Mental Wellbeing Practice Lead

Courageously Superior Video

Newham Young People



Ask me anything

0 questions

0 upvotes

Newham Suicide Prevention Strategy

Laura Austin-Croft

Public Health Consultant - LBN Commissioning, Public Health

Hafsa Elmi

Senior Strategist, Public Health



Training Plan for 2023-24

Sheila Leighton

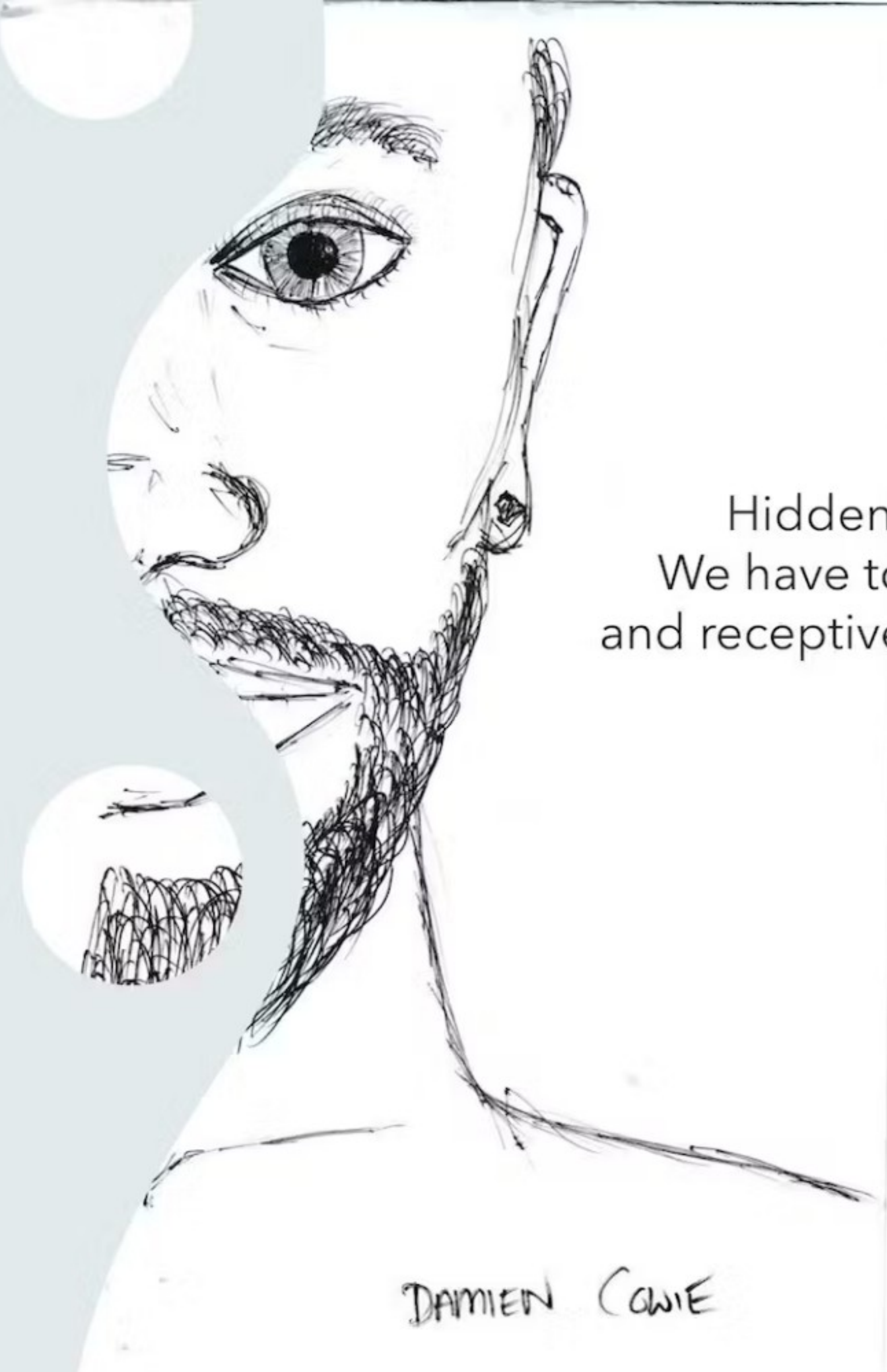
Safeguarding Lead for workforce development



NSCP Training Programme

Sept 2023 - 24

Hidden Talent!
We have to be open
and receptive to seeing it.



Internal offers

20 Courses offered three times over the year

Course Titles

Child Criminal Exploitation Workshop
Child Protection and Conference Group Meetings
Difficult Conversations – CSA -New
Domestic Abuse Advanced
Early Help Framework & Team Around the Family
Extra Familial Harm training - Complex
Harm/Complex Safeguarding - Adolescent
Safeguarding - Contextual Safeguarding -
Working with Young Women and Girls Affected by
Gangs - revamped
Extremism and the impact on Children and Young
People
Female Genital Mutilation
Homelessness and Duty to Refer - Returning

Introducing The Havens and NEL CSA Hub: Supporting
recovery and health of children affected by Child
Sexual Abuse - New
Managing Allegations and LADO Roles
Modern Day Slavery - New
Parental Substance Abuse - Returning
Perinatal Mental Health
Sec 47 training -New
Self-harm - Returning
Systemic Training - ideas for working with young
people who have experienced trauma - Revamped
Working Together to Safeguard Children Cared Away
from Home

External offers

17 Courses offered twice over the year

Course Titles

Awareness of Harmful Sexual Behaviour
Child Neglect: Assessing the Quality of Parental Care – using GCP2 Tool
Complex Safeguarding- Risk & Strengths linked to faith & belief
Cultural Competence and Safeguarding
Digital Safeguarding
GCP2 Surgery – Beyond the training
Healthy Relationships & Online Sexual Content
Intra-familial child sexual abuse – an introduction (multi-agency)
Safeguarding Disabled Children
Sibling sexual abuse
SP-EAK: Suicide Prevention – Explore, Ask, Keep-Safe
SP-OT Suicide Prevention Tutorial Overview
ThinkChild Think Family, think Lifestory
Transgender Awareness Workshop
Understanding Adolescent Mental Health: Implications for practice and improving wellbeing
Understanding Parental Mental Ill-Health & Impact on Parents & Carers
Working effectively with non-abusing parents and carers (Multi-agency)

NEWHAM'S SUICIDE PREVENTION STRATEGY AND ACTION PLAN 2023-2026



WE ARE NEWHAM.

People at the Heart
of Everything We Do

FOUR STRATEGY GOALS

1. Improve awareness of Newham's suicide prevention strategy and local support services to create greater understanding of available help.
2. Make best use of community assets together with closely aligned borough strategies and programmes of work to help reduce risk. This includes working with communities and residents to help inform and co design how support can be Accessible, Relevant and Trusted (ART) by higher risk population groups.
3. Improve data collection and intelligence through working with health partners, the Coroner's office and London's Real Time Surveillance System (RTSS) to gain better understanding of population risks for Newham.
4. Continue to strengthen mental health support for children and young people in Newham to build resilience before adulthood, with the most recent audit data showing highest numbers of suicide in Newham between 20 to 40 years of age.

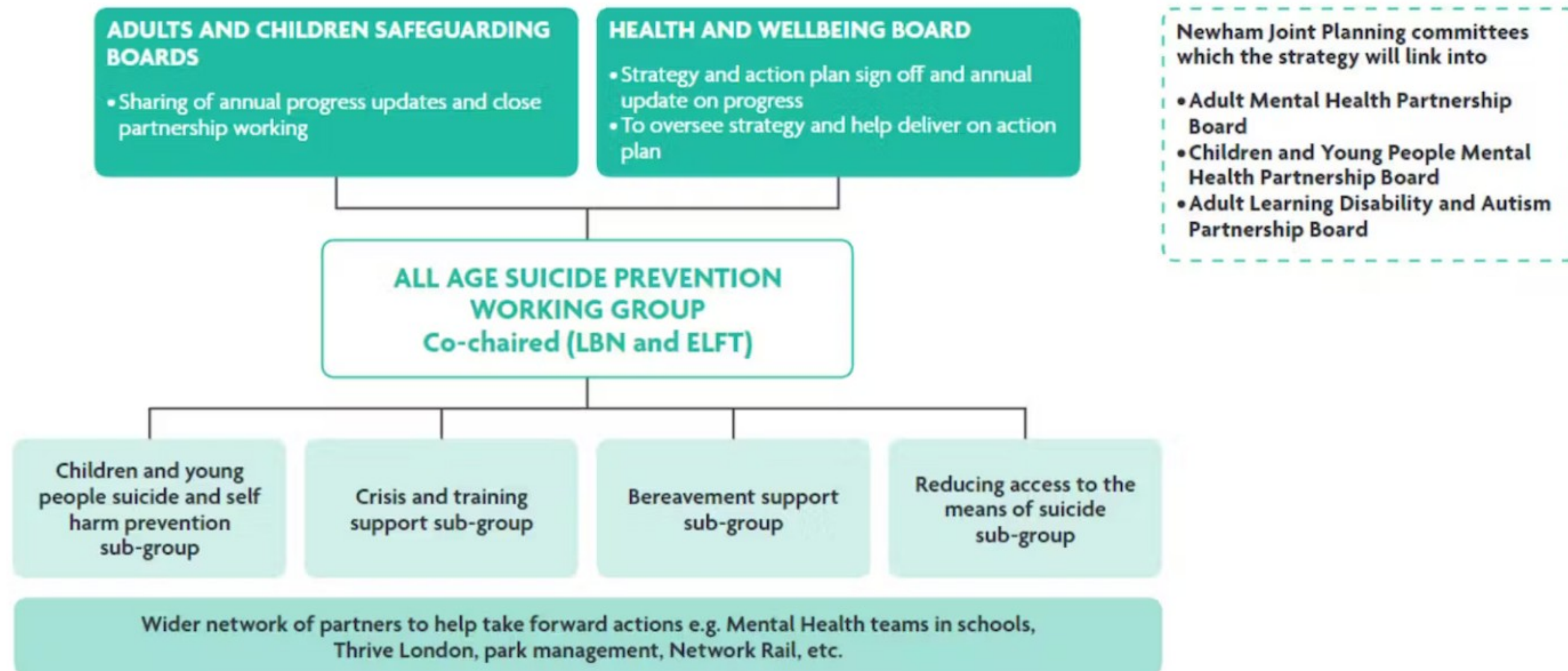
POPULATION RISK FACTORS FOR PEOPLE UNDER 18 YEARS OF AGE

Figure 2 presents data from the National Child Mortality Database in terms of population risk factors for people under 18 years of age (analysis of 108 in total). The analysis found that 89% of children or young people who died from suicide had more than one risk factor recorded, with 56% experiencing five or more risks.



STRATEGY GOVERNANCE

Governance of Newham's Suicide prevention strategy



1. REDUCE RISK OF SUICIDE IN HIGH-RISK GROUPS

Newham London

Continue to embed Children and Young People suicidal risk factors within processes for assessment of risk along with the relevant learning from Child Safeguarding Practice Reviews.

Ensure primary care is part of a multi-agency approach to identifying children at risk with effective collaborative working with other sectors such as the education and social care systems.

Identify opportunities to reduce suicide risk amongst young people who are neuro-diverse and/or who are known to youth justice and/ or at risk of adolescent exploitation.

2. REDUCE RATES OF SELF-HARM

ACTIONS

Understand prevalence of self-harm in Newham in children, young people and vulnerable adult settings including:

- Who is most at risk
- How self-harm is perceived and responded to
- Support gaps
- Recommended prevention and early intervention steps

Build awareness, understanding of how to take forward new NICE guidelines including in schools, primary care and the criminal justice system.

Identify resources including guides to support conversations about self-harm and how best to access additional support, targeted in schools, family/ parents and friends and test out their value with partner organisations.

Partner with voluntary groups that support children and young people on issues around self-harm, including increasing awareness and collective understanding on how best to tailor support across diverse population groups.

Support the creation of safe spaces where children and young people feel safe and comfortable to talk about self-harm, potentially including peer support.

3. STRENGTHEN MENTAL HEALTH AND EARLY INTERVENTION SUPPORT

ACTIONS

- Expand reach and uptake of suicide and self-harm awareness and prevention training
- Strengthen mental health support to men
- Mental health support for women during times of identified risk, including pregnancy, first 12 months after childbirth, domestic abuse and homelessness
- Mental health support for people with long term health conditions
- Increase number of culturally competent trusted spaces that people can access for support.
- Develop understanding and practice of a trauma informed approach across Newham
- Explore ways to embed a whole system approach to suicide and self-harm prevention in education and further education establishments
- Roll out training and support for school and create accessible information on sources of help and support
- Identification and prevention training for Social Care, Youth Justice System, 0-19, YES and community partners.
- Online safety support for young people and parents is available and accessible and online usage is considered in risk assessments

STAYING SAFE AND CONNECTED

www.newham.gov.uk/suicideprevention

The webpage includes a practitioners resource section providing information about a range of local services including where and how to access help. It covers:

- Crisis support
- Adult suicide prevention and mental health support
- Children and young people suicide prevention and mental health support
- Adult bereavement support
- Children and young people bereavement support
- Social support
- Suicide prevention training and online safety resources
- Financial and mental health support

Contents

1. About the Newham Suicide Prevention Strategy
2. The Suicide and Self-harm Strategy
3. How we will deliver the strategy
4. Practitioners Resource

About the Newham Suicide Prevention Strategy



STAYING SAFE AND CONNECTED

NEWHAM SUICIDE PREVENTION STRATEGY AND ACTION PLAN 2023-26

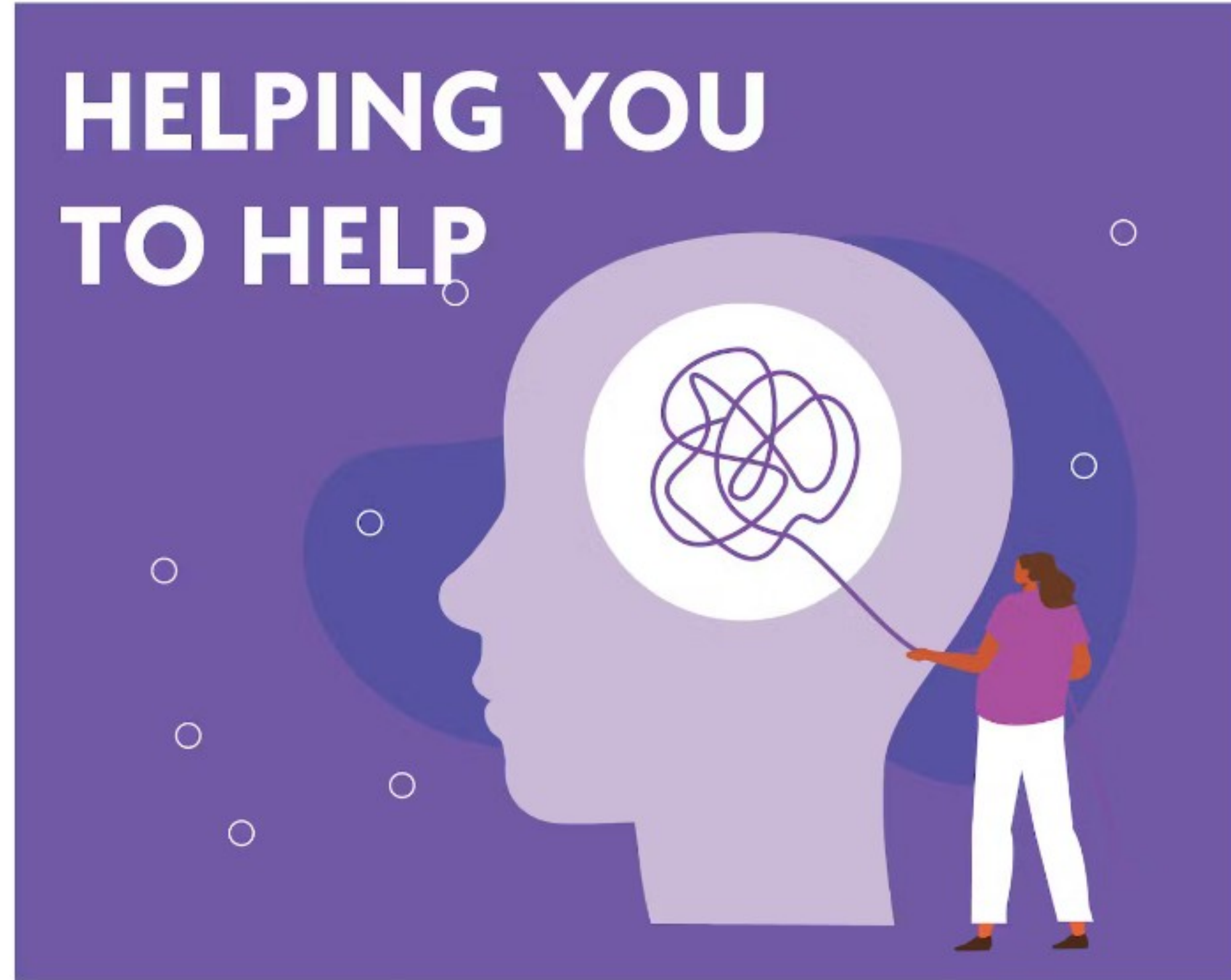


WE ARE NEWHAM.

**People at the Heart
of Everything We Do**

SUICIDE PREVENTION TRAINING

HELPING YOU TO HELP



North East London Suicide Prevention Multi Agency
Training Hub offers free training for people working
and living in Newham

WE ARE NEWHAM.

Some homework for September Forum

a report into progress made by the Met and partners following the “strip searching” of a child



Closing Remarks

Jack Squires

Designated Nurse Safeguarding Children, covering Newham.

NHS North East London

Part of North East London Health and Care Partnership



What can you take away today's forum

2

Answers

Importance of promoting seven minute briefings Need to find out how to promote private fostering easily - is there a poster? Great to hear about the safe places need to promote this too.

How important about hearing young peoples voices as demonstrated by the video

SUICIDE PREVENTION TRAINING AND DEMYSTIFYING SELF-HARM

Suicide First Aid Lite

Teaches the skills needed to identify someone who may be thinking about suicide. Four hour course for a range of practitioners including health, housing, social care, education, criminal justice, call centre operators, private, voluntary and public sector workers and community members. To register visit:

nelseuicidepreventiontraining.co.uk/sfalite/

Suicide First Aid Lite Youth

Training delivered virtually. FA Lite Youth is comprised of 2 parts over half day. Knowledge needed to identify a young person who may be thinking about suicide and competently intervene to help create suicide-safety and support with coping, as a first aid approach. Mainly for people that work with and care for children and young people. To register visit: nelseuicidepreventiontraining.co.uk/sfaliteyouth

Mental Health First Aid Youth

This training provides the knowledge, skills and confidence needed to spot the signs of mental health issues in a young person, offer first aid and guide them towards the support they need. No prior knowledge of mental health needed and open to anyone over 16 years old. Course is delivered across 4 manageable bitesize sessions online across four days. To register visit: nelseuicidepreventiontraining.co.uk/mhfa-youth/

Mental Health First Aid Adult

The Adult MHFA course qualifies you as a Mental Health First Aider, course accredited by

the Royal Society of Public Health. Course is delivered across 2 days. To register visit: nelseuicidepreventiontraining.co.uk/mhfa/

SafeTALK: Suicide Awareness

Face to face 3 and a half hour training to support people to know what to do if someone's suicidal by following the TALK steps – Tell, Ask, Listen and Keep-safe, and how to offer immediate help to someone having thoughts of suicide. To register visit: nelseuicidepreventiontraining.co.uk/safetalk

Applied Suicide Intervention Skills Training (ASIST)

A course for care-givers and key community members. It teaches suicide alertness and an easy to remember framework of practical skills to safely initiate, complete and follow-up on a full suicide intervention. ASIST training is an intensive 2 day face to face only course for care-givers and key community members. To register visit: nelseuicidepreventiontraining.co.uk/asist

Demystifying Self Harm (Virtually Delivered)

This course will allow the space for participants to have open conversations about self-harm, including unpacking our own feelings and attitudes around self-harm (including thinking about our own faith, beliefs, life experience) and acknowledge them so that we are informed of how they may present and impact the support we provide. To register visit: nelseuicidepreventiontraining.co.uk/selfharm/



Scan the QR code to visit the suicide prevention practitioner's resource
www.newham.gov.uk/health-adult-social-care/crisis-support/7