

Newham Safeguarding Children's Board Multi-Agency Training Programme 2018 - 2019



NEWHAM LOCAL
SAFEGUARDING CHILDREN
BOARD

Contents Page

Child Neglect: An Introduction	Page 6
Child Neglect: Assessing the Quality of Parental Care	Page 7
Child Sexual Abuse: An Introduction	Page 8
Child Sexual Abuse: Assessment, Investigation and Safety Planning	Page 9
Child Sexual Exploitation: An Introduction	Page 10
Child Sexual Exploitation for Lead Professionals and Safeguarding Leads	Page 11
Creating Safer Organisations	Page 12
Criminal Exploitation Workshops	Page 13
Cultural Competence and Safeguarding	Page 14
Disabled Children and Safeguarding	Page 15
Domestic Abuse and Child Protection	Page 16
Domestic Abuse: Risk Assessment & Safety Planning	Page 17
Early Help Framework and Team Around the Family	Page 18
Effective Engagement with Families	Page 19
Extremism: Understanding the Impact on Young People	Page 20
Fabricated or Induced Illness	Page 21
Female Genital Mutilation (FGM)	Page 22
Impact of Parental Mental Health on Children and Young People	Page 23
Introduction to Safeguarding	Page 24
Managing Allegations and the LADO Process	Page 25
Messages from Child Deaths & Serious Case Reviews	Page 26
Messages from Serious Case Reviews	Page 27
Newham Pre-birth Protocol	Page 28
Parental Substance Misuse & Children and Young People	Page 29
Perinatal Mental Health	Page 30
Radicalisation Awareness Training	Page 31
Self-harm, Suicide and Young People	Page 32
Working together: Child Protection and Conferences Group Meetings	Page 33

Course Information

Staff working with Newham children and families can apply to attend an LSCB course. We use professionals from all LSCB agencies to deliver the courses along with some independent trainers.

There are 20 places available per event open to Health, School, Children's Social Care, Police, Probation, NSPCC, YOT, CAFCASS, Youth Service, Fire Service, Adult Services, Community and Voluntary Sector, Children's Centres and Private Nurseries. If your agency is not listed this does not mean you can not apply, please contact the LSCB administrator for clarification. Courses are held throughout London Borough of Newham.

Important information:

Most training courses are subject to change or cancellation, this is very unlikely and you will be informed by the LSCB administrator in such cases.

Registration:

Participants should register online for their course of choice at <http://www.newhamlscb.org.uk/events/> Following registration you should receive an automatic confirmation outlining course venue, date and time.

If you have any additional queries or did not receive confirmation, please email LSCB.administrator@newham.gov.uk.

Start Times:

All course times vary so please refer to the LSCB website for further information. Participants should arrive at the venue 15 minutes before the course start time for registration. If you arrive late you may be turned away by the trainer.

Late arrivals/Early departure:

We understand that unavoidable circumstances may mean that a participant is late for a course or needs to leave early. If you know in advance that this may be an issue for you please contact a member of the LSCB team. The LSCB trainers have the right to refuse a place to a participant if they miss a significant section of the session and will not normally admit people who are more than 30 minutes late.

Signing in:

Participants are required to sign the sheet provided at the start of a course. Failure to do so may result in a participant not being given a certificate and being charged for non-attendance. If a participant's name does not appear on the sheet the trainer has the right to request that the person does not stay for the course, or that the participant shows proof of their place

Course Information

Certificates:

All participants on LSCB courses will receive a certificate of attendance, however, the trainer reserves the right not to give certificates to people who do not attend for a full day or are deemed not to have fully participated in the sessions.

Evaluations:

Participants will be given an opportunity to evaluate a course at the end of the session using an on-line link. This information will be used to inform future training, including updating materials, changing course content and venue choice.

6 weeks following course completion participants will be asked to complete another evaluation which will assess the impact of the training on their practice. Only following completion of this evaluation will participants receive their certificate.

Non-Attendance:

Due to high numbers of people not attending the courses that LSCB provide, we have a non-attendance policy. There are no costs incurred to attend, however, please note that there will be a charge of £100.00 (£50.00 for half day courses) for non attendance. If the place is cancelled 5 working days before the event or the delegate is replaced on the day, then no charge will be incurred. All charges recuperated will be directed back into the training budget.

Refreshments:

In order to allow the LSCB to provide free places on courses we do not provide free lunch for participants. The LSCB will provide tea and coffee throughout the day on all courses. However, we would recommend attendees to purchase their own lunch

Additional Learning Requirements:

Should you have any requirements which would make your learning and participation on a course better please use the section on the application form to inform us of this. We will make every effort to meet these needs and if this is not possible we will contact you to discuss.

Cancellation Charges

Courses are free for attendees, however failure to attend once a place has been booked will incur a charge of £50 for half day course, £100 for full day course billed separately after the event. Cancellations must be received 48 hours prior to training session via email only to : LSCB.Administrator@newham.gov.uk

Course Information

The LSCB has a system of training levels for each course to support participants in developing their knowledge accordingly. The levels are detailed below and will be outlined through the brochure in each course description.

The Safeguarding or Workforce Development Lead for each agency will communicate to staff which courses they should attend.

Please check that the course you are applying for is suitable for your role. If you are unsure about this please contact the LSCB team.

Level 1

Training at this level provides basic safeguarding/ child protection information i.e. different forms of abuse, vulnerable groups and appropriate actions to take if concerns are identified.

This is for staff that come into direct contact with children and families but who do not have caseload work responsibility. For example, community centres, enforcement, GP surgery, housing office, library or leisure centres.

Level 2

Training at this level will elaborate on safeguarding and child protection topics e.g. the impact of abuse, how to identify it, how to advocate for a child and when to refer to social care. Information provided will be drawn from lessons in research, legislation and discussion will include a multi-disciplinary approach.

This is for staff that have regular contact with children and families within the community. For example, staff working in children's centres, schools and colleges; education support services; faith sector; health professionals; youth centres; PVI services; and safeguarding leads for community based services.

Level 3

Training at this level will provide specialist knowledge and skills in child protection. Information provided will be drawn from research, legislation, serious case reviews and discussion will include personal reflection and case scenarios.

This is primarily for staff working with vulnerable children and their families in the following settings: children's social care; child and adolescent mental health services; specialist police teams; criminal justice; adult social care and designated or named leads in health and education.

Child Neglect: An Introduction

Background:

Neglect is the most common form of maltreatment suffered by children in the UK (NSPCC, 2014). The impact of neglect on children cannot be overestimated. Neglect causes great distress and harm to children and leads to poor health, educational and social outcomes in the short and long-term. In some cases, neglect will be a causal or contributory factor in childhood deaths.

Training Level:2

Learning Outcomes:

By the end of the course, participants will:

- Know how to recognise the key indicators of child neglect
- Know how to respond to neglect using the Newham early help and statutory pathways
- Understand the impact of neglect on children's development
- Know how to recognise barriers to progress and when to step-up cases
- Have a brief introduction to the Graded Care Profile Tool

Training Materials:

Materials from the LSCB Strategy to Tackle Neglect 2017/19

Course Dates:

18th June 2018, 3rd September 2018, 3rd December 2018

TO BOOK LOG IN TO: www.newhamlscb.org.uk



Child Neglect: Assessing the Quality of Parental Care

Background:

The NSPCC Graded Care Profile GCP2 is a standardised tool for assessing the quality of parental care where neglect is a concern. It provides an assessment of the quality of care across the 4 domains of physical; safety, emotional; developmental needs. Newham LSCB have adopted the tool and training key professionals to use this as part of assessment and intervention.

Training Level:2/3

This accredited 1 half day training is for practitioners who have a key worker role and are undertaking home visits to families or who have other opportunities to observe care-giving.

Learning Outcomes:

Attendees will be taught to use the GCP2 and on successful completion of the course and return of a completed GCP2 will be accredited to use the tool.

Training Materials:

Graded Care Profile Assessment Tool with Video and Manual

Course Dates:

Half day session

12th July, 11th September, 28th November.
31st January 2019



Child Sexual Abuse: An Introduction

Background:

To enhance knowledge of sexual abuse; how to recognize signs, the impact, how to support a child who has been sexually abused and what to do when a child has made this disclosure.

Training Level: 2

Learning Outcomes:

By the end of the course participants will :

- Know how to recognise the signs and symptoms of child sexual abuse
- Understand the nature and impact of sexual abuse on children's health and wellbeing during childhood and beyond
- Be aware of developmental perspectives and the communication methods children may use and understand the barriers and reasons why children may not disclose sexual abuse
- Be confident to report and refer cases of alleged and/or suspected child sexual abuse in accordance with the London Child Protection Procedures
- Be familiar with the child protection investigation process and their role in this
- Gain strategies for working with children and their carers in cases that have been stepped down on completing of a child protection investigation
- Consider the role of meaningful relationships in increasing a child's strengths and resilience
- Have information on local services and resources that can support children and their families



Training Materials:

All training handouts and PowerPoint presentation and relevant material used will be provided electronically

Dates: TBC

Child Sexual Abuse: Assessment, investigation and safety planning

Background:

This course is for social workers, police officers and safeguarding leads that have a lead professional role in protecting children from sexual abuse. Participants need to have achieved the learning outcomes set out in the Intro. to CSA course

Training Level: 3

Learning Outcomes:

By the end of the course participants will:

- Have an in-depth knowledge and understanding of the London Child Protection Procedures relating to child sexual abuse
- Be confident to carry out joint or single agency s47 investigations and conduct effective strategy meetings
- Understand the different thresholds for criminal justice and welfare intervention to ensure that risks are appropriately managed
- Be able to develop effective multi-agency safety plans – both immediate and longer term plans
- Gain an understanding of sex offender behaviour

Training Materials:

All training handouts and PowerPoint presentation and relevant material used will be provided electronically

Dates: TBC



Child Sexual Exploitation: An Introduction

Background:

This half a day training session enables participants to develop a greater awareness of CSE, equipping professionals with tools to develop effective responses. Throughout the training you will be encouraged and supported to consider how your own practice can best address and support children and young people at risk or experiencing CSE.

Training Level: 2

Learning Outcomes:

As a result of the training, you will:

- Identify risks and indicators for young people experiencing or at risk of CSE
- Analyse roles of young women linked to gangs and relate to experiences of CSE
- Recognise opportunities for early intervention
- Demonstrate an effective response to disclosure of CSE
- Contextualise responses to CSE within your local referral process

Training Materials:

All training handouts and PowerPoint presentation and relevant material used will be provided electronically

Course Dates:

23rd May 2018 & 27th September 2019

TO BOOK LOG IN TO: www.newhamlscb.org.uk



Child Sexual Exploitation for Lead Professionals and Safeguarding Leads

Background:

This one day training session enables participants to develop a greater awareness of CSE, equipping professionals with tools to develop effective responses. Throughout the training you will be encouraged and supported to consider how your own practice can best address and support children and young people at risk or experiencing CSE.

Training Level: 3

Learning Outcomes:

As a result of the training, you will:

- Identify risks and indicators for young people experiencing or at risk of CSE
- Analyse roles of young women linked to gangs and relate to experiences of CSE
- Recognise opportunities for early intervention
- Investigate safety planning tools
- Demonstrate an effective response to disclosure of CSE
- Contextualise responses to CSE within your local referral process



Training Materials:

All training handouts and PowerPoint presentation and relevant material used will be provided electronically

Course Dates:

10th July 2018 & 6th November 2018
13th March 2019

TO BOOK LOG IN TO: www.newhamlscb.org.uk

Creating Safer Organisations

Background:

The course will inform and ensure that practitioners, volunteers and managers understand safer recruitment procedures, identify warning signs that may indicate harmful behaviour and manage allegations against practitioners in accordance with local and national procedures.

Training Level:3

Learning Outcomes:

By the end of the course the learners should be able to:

- Gain an understanding of the risk posed to children from practitioners
- Be aware of recent legislation and know what to do if you have a concern about another practitioner
- Be aware of Local Authority Designated Officer (LADO) responsibility;
- Know what to do when an allegation is made
- Gain an awareness of the support and interventions available for the practitioner who has the allegation made against them
- Increase their awareness of child protection cases that have influenced current policy and procedures around staff recruitment
- Consider policies and practices that minimise opportunities for abuse or ensure its prompt reporting/safer recruitment procedures;
- Understand the role of the Disclosure and Barring Service (DBS)



Course Dates:

5th July 2018 & 2nd October 2018
12th December 19

Training Materials:

Quiz , case study and Copies of statutory guidance and policy as well as 'Best Practice' templates will be provided

Criminal Exploitation Workshops

Background:

In 2017, the Government introduced national guidance to help identify and protect those exploited through criminal exploitation. This guidance is part of the cross-government approach to ending gang violence and exploitation.

Training Level 2/3

Learning Outcomes: Attendees will gain the following knowledge

- How young people are targeted to join groups.
- The business model of county lines and how this operates.
- The safeguarding response to Criminal Exploitation
- The signs and triggers to be aware of with regards to those who are involved and/or at risk of county lines.
- The strategic and tactical plan to address Criminal exploitation.
- How Youth violence and exploitation is evolving;

A key outcome of the workshop, will be to identify individuals to be champions, and act as a point of reference to signpost colleagues for further information, advice and guidance

Training Materials

Slides, Case Studies, Risk Assessment Tool

Course Dates:

All half day courses - PM

5th June 2018, 17th July 2018, 26th September 2018, 19th November 2018

28th January 2019 & 4th March 2019



Cultural Competence and Safeguarding

Background

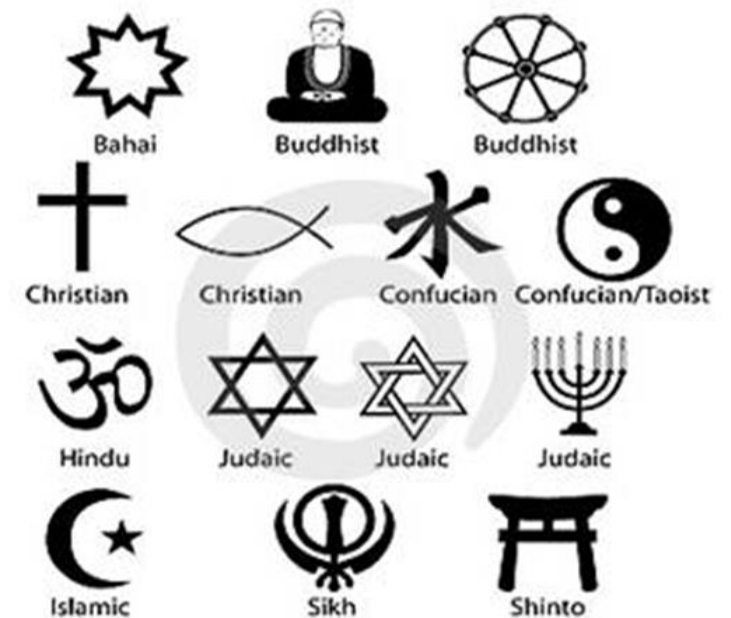
This course aims to enhance practitioners' knowledge, skills and understanding of how race, culture and/or faith and belief systems can impact on our safeguarding children practice. The course will also focus on the roles and responsibilities of practitioners, the legal framework and how to identify risk factors.

Training Level:3

Learning Outcomes:

By the end of the course participants will be able to:

- Describe the influence of own race, culture, faith, beliefs on attitudes to child parenting
- Display confidence in talking about their own and other peoples attitudes and beliefs
- Recognise when belief systems are in conflict with children's wellbeing and safety; know how to advocate for children and provide appropriate challenge to parent/carers and other professionals
- Demonstrate good practice skills in these areas when leading or contributing to risk assessment and safety planning
- Outline the key local issues related to the course topics
- Work with families and communities to change behaviours
- Develop a better understanding of key harmful traditional practices
- Describe the key features of the legal framework related to harmful practices: including honour based violence (HBV), Forced Marriage, Female Genital Mutilation (FGM) and Faith Based Violence (FBV)



Training Material:

- Quiz and factsheets on national legislation, guidance and policy
- Messages for practice from SCRs.
- Cultural competence model and tool.
- Printed power point handout

Course Dates:

16th May 2018 & 16th October 2018
5th February 2019

Disabled Children and Safeguarding

Background:

To increase confidence and good practice in working with disabled children and their families in order to assess children's needs, identify risks and take effective and timely action to protect children at risk of harm. This course will explore the challenges of protecting disabled children effectively and will highlight the need to recognise the diverse ways in which children may communicate their needs.

This course should be attended after completion of the course Introduction into Safeguarding.

Training Level: 2/3

Learning Outcomes:

By the end of the training participants will be able to:

- Understand the factors that can increase the risk of neglect and abuse of disabled children and young people.
- Be aware of legislation, procedures and guidance regarding the safeguarding of disabled children and explore messages from research and serious case reviews.
- Develop knowledge and skills in assessing the needs of (and risks to) disabled children in order to ensure responses and interventions are as effective as possible in supporting families and promoting the welfare of the child
- Recognise indicators for concern and make appropriate decisions about the action to take when concerns arise for disabled children

Training Material:

Behavior as Communication - Case Studies, Creative Communication Techniques Handout and Case Scenarios.

Course Dates:

7th June 2018 and 13th September 2018

TO BOOK LOG IN TO: www.newhamlscb.org.uk



Domestic Abuse and Child Protection

Background:

The course will look at the impact of domestic abuse on adult victims and their children, why domestic abuse is a safeguarding issue for children and the routes for help and protection.

Training Level: 2/3

Learning Outcomes:

By the end of the course participants will have:

- A good understanding of the nature of relationships which are characterised by violence
- The impact of witnessing domestic abuse on children and their development
- Why victims may stay in and/or return to an abuse relationship
- Understand the basics of risk assessment and safety planning
- Tools and strategies for protecting children who are exposed to domestic abuse
- Knowledge of the local pathways and services for support and protection

Training Material:

Course Dates: TBC



Domestic Abuse: Risk Assessment & Safety Planning

Background:

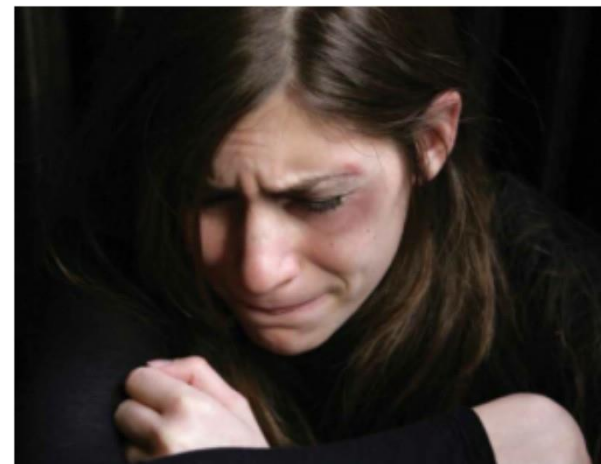
This one day workshop will give an overview of why we risk assess victims of domestic violence and abuse (DVA), the history, purpose and use of the Domestic Abuse Stalking Harassment and Honour Based Violence (DASH) risk identification checklist (RIC). Attendees will consider how to respond to disclosure of domestic abuse with empathy and understanding and the role of professionals in intervening safely. The session will also consider how to assess someone's immediate safety, build a coherent safety plan and referral to, and continued liaison with, specialist services.

Training Level: 2/3

Learning Outcomes:

By the end of the course participants will :

- Understand the common risks that are posed to victims of domestic abuse
- Know how to identify someone's level of risk
- Understand the lessons learnt from local Domestic Homicide Reviews
- Be able to describe the MARAC process
- Understand how to research a MARAC case
- Understand how and why frontline professionals should build individual safety and support plans for clients experiencing DVA
- Be aware of the safeguarding role of parents and families
- Know how to refer to NewDAy and other local services



Training Material:

Handouts, assessment tools, academic research

Course Dates:

21st June 2018; 20th September 2018; 4th November 2018
15th February 2019

Early Help Framework and Team Around the Family

Background:

There are over 85,000 children and young people in Newham – more than a third of our residents are under 18 – and we want each of them to have the best possible start in life. We have a strong universal offer in Newham through schools, children's centres and health – but some of our children and young people need extra support and a few need a lot of help. When families are finding it difficult to cope by themselves, we have a duty to help and support them to build resilience to help themselves.

This training will support participants to embed the Early Help Framework and the Early Help Record as the tool to identify when children and families would benefit from early help support and used to Understand, Plan, Do and Review to plan a pathway of holistic help and support for the whole family through the Team Around approach. The role and responsibilities of the community Early Help Lead Practitioner is also a core element of the training.

Training Level: 2

Outcomes:

By the end of the session participants will:

- Explain the purpose of the Early Help Framework and Record and integrated neighbourhood working and its links to current legislation, guidance and theories.
- Increase their confidence in completing the Early Help Record to identify strengths and needs of children/young people and their families.
- Reflect upon their role, approaches and tools they can use to become an effective lead community early help practitioner.
- Better understanding of the benefits of embedding the principles and function of a Team around the Family approach to review the families progress against the agreed actions.

Course Dates:

Full day sessions

5 June, 11 Sept, 13 Nov 2018 and 8 Jan,

6 March 2019

TO BOOK LOG IN TO: www.newhamlscb.org.uk



Effective Engagement with Families

Background:

The critical role played by practitioners in engaging and communicating with families has been highlighted in findings from serious case reviews and is at the heart of many Early Help strategies. Engaging families with high levels of need can be challenging though and the way we communicate with parents is often critical. This course aims to support practitioners to feel more confident in this task. It provides an opportunity to stand back from the detail of the work and reflect on how we engage in these relationships and what gets in the way of successful engagement.

Training Level: 3

Learning Outcomes:

By the end of the course the learners should be able to:

- Describe what is meant by engagement and, therefore, what is meant by “effective engagement with families”
- Describe the variety of ways in which families do not engage and co-operate and why families may exhibit difficulties in engaging
- Recognise the barriers that working with difficult to engage families causes in keeping the child at the centre of the work
- How to progress risk assessments whilst working to facilitate change and improve engagement
- Develop the skills to manage and diffuse highly charged and difficult situations
- Ensure that practitioners have a further insight into disguised compliance

Training Materials:

Slides, hand outs and case Studies.

Course Dates:

All half day am sessions
15th June 2018 17th September 2018
8th February 2019



Extremism: Understanding the Impact on Young People

Background:

Building professional confidence in effectively addressing the exposure to extremism within context of safeguarding

Training Level: 3

Learning Outcomes:

By the end of the training, participants will have:

- Revisit understanding of the Prevent Duty and processes and pathways
- Explore how exposure to extremism is a safeguarding matter and the different levels of emotional harm
- Consider how to identify exposure to extremism
- Awareness of how to gain effective engagement with children exposed to extremism and with their parents
- Consider how to work with effectively to reduce risk and strengthen child's resilience and parenting capacity to meet the emotional and other needs of a child exposed to extremism
- Exploring range of solutions and interventions to reduce possibility or impact of exposure to extremism

Training Materials:

All training handouts and PowerPoint presentation and relevant material used will be provided electronically

Course Dates:

25th June 2018, 12th November 2018

25th March 19

TO BOOK LOG IN TO: www.newhamlscb.org.uk



Fabricated or Induced Illness

Background:

The course will inform practitioners on what is Fabricated and Induced Illness, how to recognise it and how to intervene.

Training Level: 1

Learning Outcomes:

By the end of the training, participants will know :

- What is Fabricated and Induced Illness and how it occurs.
- How to identify cases of Fabricated and Induced Illness- Multi-agency work.
- Intervention in Fabricated and Induced Illness cases.

Training Material:

Printed power-point handout

Course Dates:

Half-day training
10th May 2018 & 13th June 2018

TO BOOK LOG IN TO: www.newhamlscb.org.uk



Female Genital Mutilation (FGM)

Background:

This half day course is suitable for any staff working in FGM practicing communities or with an interest in this area. It is recommended that at least 2 staff in each setting/team attend this training as mobility of practitioners and families means that all may encounter this at some stage. This course will enable practitioners to have an understanding of their roles and responsibilities regarding issues relating to FGM and safeguarding.

Training Level: 2/3

Learning Outcomes:

By the end of the training, participants will be able :

- To gain awareness of FGM guidelines and how to access them
- To consider how FGM relates to the safeguarding agenda
- To understand the background, signs, symptoms and health implications of FGM
- To know how to make a referral to the local provider

Training Materials:

Handouts and case studies and the electronic Newham FGM Protocol

Course Dates:

Half-Day Training

14th June 2018 & 16th November 2018

14th March 2019

TO BOOK LOG IN TO: www.newhamlscb.org.uk



Impact of Parental Mental Health on Children and Young People

Background:

The aim of this course is to raise participants' awareness of the impact upon dependent children of parental mental illness and to develop their knowledge of good practice in this area of work.

Learning Outcomes:

By the end of the course participants should be able to:

- Have an increased awareness of the range of parental mental health problems
- Have an increased awareness of local mental health services
- Understand specific risks to children resulting from parental mental illness
- Identify key aspects of mental illness and understand how these may impact on parenting capacity
- Engage effectively in multi-agency assessments and interventions where there are concerns relating to the impact upon a child of parental mental illness.

Course Dates:

All half day courses
22nd June 2018 & 27th November 2018
26th February 2019



Introduction to Safeguarding

Background:

All staff employed within a multi-agency arena have an important role to play in safeguarding children and are often in key positions to identify and respond to concerns about abuse and neglect. This course is to enable all those who come into frequent contact with children and young people to develop awareness of, and the ability to act on, concerns about their welfare and safety.

Training Level: 1

Learning Outcomes:

By the end of the training, participants will be able to learn:

- What to do if they are concerned about the safety and welfare of a child
- Disclosure
- Their role and responsibility in relation to child protection
- Categories of abuse, signs, symptoms and referral processes
- Introduction to the legal framework

Training Material:

- Reference list of key safeguarding legislation and guidance
- Summary of content and quiz
- Mapping “Signs and symptoms” of abuse” Case studies
- Printed power-point handout

Course Dates:

29th May 2018, 28th June 2018, 23rd July 2018.
More dates to follow

TO BOOK LOG IN TO: www.newhamlscb.org.uk



Managing Allegations and the LADO Process

Background:

When allegations are made against staff or volunteers who work with children, organisations need to be aware of their statutory duties. This course aims to inform participants of what these duties are, how the LADO Process works and how to complete internal investigations both inside and outside of this process.

Training Level:3

Learning Outcomes:

By the end of the course the learners should be able to:

- Know what to do when an allegation is made.
- Have a good understanding of LADO threshold and the process in general.
- Provide support and assistance to employees during the process.
- Complete internal investigations into allegations that fall both inside and outside of the LADO Framework.
- Review / Develop a policy for the Management of Allegations for their Organisation.

Training Materials

Copies of statutory guidance and policy as well as 'Best Practice' templates will be provided.

Course Dates:

Half-Day Training - AM
9th May 2018 & 19th September 2018
23rd January 2019



Messages from Child Deaths & Serious Case Reviews

Background:

'The death of a child is a tragedy. It is vital that all child deaths are carefully reviewed. This is so that we may learn as much as possible from them, in order to better support families and to try to prevent future deaths' (The Lullaby Trust 2016)

Training Level: 2

Learning Outcomes:

By the end of the session participants will:

- Have increased knowledge around Health and Safety and keeping children safe.
- Be aware of the numbers of child deaths in Newham and have an understanding of current trends identified.
- Have an understanding of the Child Death Review Process, the role of the CDOP, the role of staff involved with a child death and its value to Public Health and Improving Child Safety through Prevention
- Understand the difference between Serious Case Reviews and the child death overview process
- Have an improved understanding of risks and the possible pitfalls in multi-agency working to protecting children and young people
- Explore the lessons learned from SCR's and local Learning reviews to reflect upon what they mean for their agency and their own practice



Training Material:

Power-point Presentation, Case Studies / Handouts

Course Dates:

27th June 2018, 12th September 2018 & 7th November 2018

TO BOOK LOG IN TO: www.newhamlscb.org.uk



Messages from Serious Case Reviews

Background:

To enable participants to gain an understanding of the importance of Serious Case Reviews (SCR) and how the findings from them impact on practice.

Training Level: 3 by invitation

- Social Workers/Practice Leaders
- Families First Coaches
- CAMHS staff
- Specialist Police Officers
- YOT and Youth Service staff

Learning Outcomes:

By the end of the training, participants will be able to:

- Understand and apply the learning from the Child J Serious Case Review and the emerging findings from a current SCR
- Know where to go for further training and resources

Training Materials:

All training handouts and PowerPoint presentation and relevant material used will be provided electronically

Course Dates & Venues:

- 3rd May 2018 - Newham Dockside
- 9th May 2018 - Beckton Road - 9.00am - 13.00pm

TO BOOK LOG IN TO: www.newhamlscb.org.uk



Newham Pre-birth Protocol

Background:

This multi-agency protocol has been developed for professionals working with pregnant women where there is a likelihood of safeguarding concerns. It outlines multi-agency responsibilities and supports with timescales for social care assessment. This protocol is key in enhancing pre-birth assessments and multi-agency safety planning, supported by recent audits of pre-birth cases.

Training Level: 3

Learning Outcomes:

By the end of the training, participants will be able to learn:

- To understand what a pre birth protocol is
- To have a greater understanding of the importance of the pre birth assessment
- To identify learning from SCR's in relation to pre birth assessments
- To ensure quality pre birth assessments following a recent audit
- To encourage good multiagency communication & decision making

Training Material:

- Presentation
- Printed pre-birth protocol
- Case studies

Course Dates:

All half-day training

24th May 2018, 1st June 2018, 9th July 2018, 14th September, 25th October 2018

TO BOOK LOG IN TO: www.newhamlscb.org.uk



Parental Substance Misuse & Children and Young People

Background:

We hope to broaden participants' understanding of issues relating to substance use and parenting, allowing them to feel able to make more informed assessments in this area.

Learning Outcomes:

By the end of the course the learners should be able:

- To develop an understanding of drug and alcohol use and awareness of the effects and risks associated with the most commonly misused substances
- To explore personal attitudes and values in relation to drug use in general and to drug using parents in particular
- To explore the possible impacts on children of parental substance-misuse
- Develop skills in basic risk assessment of drug and alcohol use in regards to parenting and Child Protection
- Begin to identify practical ways of working effectively with the children around drug and alcohol using parents
- Develop intervention skills with families to reduce risk of harm
- Identify the circumstances in which concerns trigger referrals for a Children Social Care intervention
- Develop knowledge of local resources for supporting families with substance using parents.

Course Dates:

21st May 2018 & 1st October 2018

21st January 2019



Perinatal Mental Health

Background:

Participants will develop an understanding of what the term perinatal mental illness means and its recognition.

Training Level: 2/3

Learning Outcomes:

By the end of the training, participants will be able to:

- Have an understanding of the national view
- Be informed of local treatment pathways
- Develop an understanding of the nature of risk and its management in the perinatal period
- Develop an understanding of the impact of perinatal mental illness on the infant and family
- Able to consider the impact of stigma and culture on perinatal mental illness.

Training Materials:

Power point presentations, Group work small and large, Videos , Discussion

Course Dates:

6th July 2018 & 9th October 2018

25th January 2019

TO BOOK LOG IN TO: www.newhamlscb.org.uk



Radicalisation Awareness Training

Course Aim:

To gain an understanding of Prevent and to increase knowledge on this area for staff who work with members of the public

Training Level: 2/3

Learning Outcomes:

By the end of the training, participants will be able to:

- Have an understanding of the statutory obligation of Prevent Duty and its processes and pathways
- Explore how exposure to extremism is a safeguarding matter and the different levels of emotional harm
- Consider how to identify exposure to extremism
- Gain an awareness of how to engage effectively with adults, Children and Young People exposed to extremism
- Consider how to work effectively to reduce risk and strengthen resilience
- Exploring range of solutions and interventions to reduce possibility or impact of exposure to extremism
- Understand what extremism and radicalisation are and why it is important to discuss and address these
- Know the main elements of the Prevent strand of the government's CONTEST strategy
- Better understand what makes people vulnerable to radicalisation
- Know your responsibilities and recognise indicators that radicalisation might be taking place.

Training Materials:

Power point presentations, Case study, Group work, Videos, Discussion

Course Dates:

2.5 hour sessions

16th & 30th May 2018, 6th & 19th June 2018, 2nd & 19th July 2018, 9th & 21st August 2018 & 17th September 2018

TO BOOK LOG IN TO: www.newhamlscb.org.uk

Self-harm, Suicide and Young People

Background:

This is a half-day training aiming to increase practitioners' understanding and awareness about self-harming and suicidal thoughts and behaviours in children and young people. The course aims to increase compassionate and effective responding to such presentations, through the development of relationships and interactions which can help to facilitate communication, validation and alternative coping skills. It also aims to advance professional knowledge and skills in risk assessment, safeguarding and safety planning when working with self-harm and suicidality along with the promotion of multi-agency working.

Training Level: 2/3

Learning Outcomes:

By the end of the training it is hoped that practitioners will have:

- Gained a greater awareness and understanding about self-harm and suicide in children and young people
- Increased confidence and skills in working safely and compassionately with children and young people with self-harming or suicidal thoughts or behaviours
- Increased confidence and skills in risk assessment and safety planning, including working with families and partner agencies in order to support young people who self-harm or who have suicidal thoughts and behaviours.

Training Materials:

PowerPoint presentation slides and other tools

Course Dates:

All half day training - am
4th June 2018 & 21st September 2018
18th January 2019



Working together:

Child Protection and Conferences Group Meetings

Background:

A Child Protection Conference is a multi-agency meeting to decide if children are at risk of significant harm and if so to recommend a Child Protection Plan. Core group meetings are an essential part of multi agency planning process. It is imperative that all agencies ensure a total commitment to these parts of the child protection process, recognising that working in partnership with families and multi agency planning is paramount to the effectiveness of protecting children and assessing and providing for their needs.

This course should be attended after completion of the course *Introduction into Safeguarding, Protecting Children from Harm and Learning from Serious Case Reviews*.

Training Level: 2/3

Learning Outcomes:

By the end of the training participants will have:

- Develop skills to be able to contribute to effective outcome focused planning to safeguard children
- Understand their individual roles as part of the conference and Core Group
- Know the required preparation needed for attending a Strengthening Families model of conferencing
- Have the knowledge and understanding needed to participate effectively and an opportunity to participate in mock Strengthening Families conference

Training Materials:

Handouts and case studies

Course Dates:

Full day training

15th June 2018

2nd November 2018

15 March 2019

TO BOOK LOG IN TO: www.newhamlscb.org.uk